

# JAYCEES WE SALUTE YOU

## JANUARY 18-24 NATIONAL JAYCEE WEEK

### WEATHER

For within 24 hrs. preceding 8 a.m.	Min.	Max.	Precip.
Wednesday, Jan. 14	20	30	6.4 in
Thursday, Jan. 15	11	26	Trace
Friday, Jan. 16	19	24	0.02
Saturday, Jan. 17	10	35	0.03
Sunday, Jan. 18	10	19	0.00
Monday, Jan. 19	10	15	0.00
Tuesday, Jan. 20	13	33	0.01

ONE HUNDRED-SIXTH YEAR—No. 32

12 Pages This Week

Plus 4-Page Supplement

CHELSEA, MICHIGAN, THURSDAY, JANUARY 22 1,976

15c per copy

SUBSCRIPTION: \$6.00 PER YEAR

# The Chelsea Standard

### QUOTE

"God laughs at a man who says to his soul, 'Take thy ease'."  
—Abraham Crowley.

## 8 Strong Teams In Wrestling Tourney Here

This Saturday, Jan. 24 Chelsea wrestlers will be among wrestlers from seven other schools who will travel to Chelsea to participate in the 1976 Chelsea Wrestling Tournament. Five of those teams, according to Pat Clark, are expected to field some tough competition.

Presently undefeated in their own league and having won every major invitational they have entered this year, Dundee wrestlers will take a stab at marking up another tourney win Saturday. Dundee wrestlers placed fourth in the state last year for a Class C team and just to show how tough they are, Clark said that they rolled over top SEC contender Milan, 56-3.

Another top team appearing in Chelsea this Saturday is the Howell squad. Howell has always fielded a fine team and placed second only to Chelsea in their own invitational Jan. 3. Also attending will be the undefeated Class A team from Belleville, the Albion team, one of the toughest teams

from the Jackson area, and the undefeated Lake Fenton team, one of the better Class B teams in the state.

Wrestlers from Jackson Northwest, Tecumseh and Chelsea will round out the tournament.

All wrestlers are to report to the high school gymnasium between 8 and 9 a.m. Saturday morning for the weigh-in. Wrestling will begin at 11 a.m. with the consolation finals at 6:30 p.m. Finals will follow the conclusion of the consolation.

The champion will receive a medallion and neck ribbon. Second- and third-place wrestlers will receive medals and there will be a trophy for the winning team and the runner-up team.

Officiating the tournament will be John Ruhl of Dexter, Charles Beatty of Ypsilanti and John Nordlinger of Ann Arbor.

Tickets for both the afternoon and evening sessions at adult and student prices may be purchased at the door.

## Wrestlers Place 4th In Mason Tourney

Chelsea's Bulldog wrestlers finished fourth last Saturday at the Mason tournament behind wrestlers from Ovid-Elsie, Lansing Everett and Oscoda.

According to Coach Richard Bareis, the Bulldogs did not have a "good day." "We just weren't wrestling as aggressively as we should have," Bareis also said that a lot of the other wrestlers were dropping weight classes, making it quite difficult for Chelsea's younger wrestlers.

The Bulldogs were paced by championship performances from Dennis Bauer and Jim Stahl. Second-place finishes were taken by Dale Schoenberg and Tim Reed. Nick Keiser came through with a fine third-place finish and John Bulick finished with a fourth place. Jim Stahl moved his record to 16-1, defeating Lansing Everett's wrestler, 5-1, Mason 3-0, and Oscoda 4-2, in the finals. Dennis Bauer scored pins over Ovid-Elsie and Oscoda before he took a 3-0

win over Okemos in the finals. Bauer now has a 16-0 record.

Dale Schoenberg pinned Oscoda and then won 8-6 over Ovid-Elsie before losing an overtime referee's decision. Tim Reed scored a 7-0 win over Mason and a pin on St. Johns before losing a 4-3 match in the final second of the match. Nick Keiser picked up three wins and lost his semi-final match on a bad call which allowed his opponent the one point in a 3-2 decision.

(Continued on page three)

### Recreation Classes Canceled Last Week Because of Weather

Because of inclement weather, classes offered through the Chelsea Recreation Council were canceled last week. According to Holly Porter, director of the council, all classes with the exception of the Men's Basketball league, will be canceled in the event of future heavy snow storms.



PAST PRESIDENTS: Chelsea Kiwanians recognized their past presidents at their regular Monday night meeting. Seated, from left, Russell McLaughlin, Charles Cameron, Anton Nielsen, Lloyd Hildebrandt, Paul Mann and Leo Bishop. Standing, from left, are Wallace Wood, Don Tetter, Paul Schaible, Louis Burghardt, Clare



SERVICE AWARD: Presenting Mrs. Dudley K. Holmes with this year's Distinguished Service Award is Chelsea Jaycee president Mitchell Zink. Mrs. Holmes, accompanied by her son, Dudley, Jr. (right) received the award Tuesday evening at the Jaycees Bosses Night Dinner held at the Fireside Lounge in Ann Arbor. Mrs. Holmes now joins the ranks of distinguished area residents who have received the award over the years for their service to the Chelsea community.

## Mrs. Dudley Holmes Awarded JC DSA for Community Service

Mrs. Dudley K. Holmes joined the ranks of area residents who over the years have been presented with the Jaycees Distinguished Service Award for outstanding contributions to the community. Mrs. Holmes was awarded the DSA Tuesday evening when she and her son Dudley, Jr., attended the Jaycees Bosses Night Dinner at

the Fireside Lounge in Ann Arbor. Mrs. Holmes, who was one of 17 nominees for this year's award, was chosen by the panel of judges because of her contribution to blood drives not only in this community but also in the state of Michigan. According to Mitchell Zink,

Chelsea Jaycee president, who presented Mrs. Holmes with her award, she initiated and conducted the very first blood bank in the state of Michigan in 1952. Mrs. Holmes was chairman of the Chelsea Blood Bank until just five years ago when the Jaycees took over the effort.

Mrs. Holmes' strong interest in blood drives had extended over the entire state of Michigan. She has spent much of her own time traveling to Michigan communities where she has assisted in the planning and conducting of their local blood banks.

## Wrestlers Pin Defeat On Lumen Christi

Chelsea Bulldog wrestlers marked up a single dual meet victory Tuesday evening as they rolled over Jackson Lumen Christi, 36-21. "We were fortunate that the first three weight classes to us," remarked Bulldog Coach Richard Bareis. The forfeits enabled Chelsea wrestlers John Bulick, Chuck Young and Joe Kesler to pick up wins without going to the mats.

Forfeits, coupled with four wins by some of Chelsea's more seasoned wrestlers, allowed the Bulldogs the win. They lost all their other matches.

Winning matches were Nick Keiser at 147 pounds who dealt

a 13-0 decision in his own favor; Tim Reed at 157 pounds who also came up with a strong decision of 8-0; Bruce Bennett, at 169 pounds, won a close 2-1 match, and 185-pounder Dennis Bauer who won his match by scoring a pin. Bareis remarked that the Bulldogs were without the help of wrestlers Mike Young and Rick Beeman, both who were out with injuries. He commended the efforts of Bill Moore and Rocky Brandel who replaced the pair. "It was their first time out for the varsity and their efforts on the mats were good, even though they lost," Bareis said.

The Bulldogs now have a season record of 5-1 for dual matches.

## Junior High Cagers Have 6-1 Record

"It was not one of our better games," remarked Beach Middle basketball coach, Randy Johnson, as he spoke of his team's sixth victory, this one over Dexter, Tuesday evening. However, it would seem the middle school Bulldogs had little trouble defeating their Dreadnaught opponents. Johnson pointed out that his team's top scorer, Jeff Dils, who had been averaging 14 points a game, had scored 14 points in this game.

(Continued on page six)

## Bicentennial Activities

During the summer of 1959, Chelsea celebrated its 125th birthday. This summer, we will be celebrating our great nation's 200th birthday, along with more than 1200 other villages, cities, counties and states.

This weekly column will be used to help keep you up to date with the various plans and activities of the celebration.

As background information, the villages of Dexter, Chelsea, Manchester and Saline have formed the Western Washtenaw County Bicentennial Committee, headed by Leonard Kitchen, of Dexter, and Rolly Spaulding, of Chelsea to coordinate the activities of the four communities to prevent conflicts.

Locally, we have formed a non-profit corporation, Chelsea Bicentennial, Inc., to plan and carry out our activities. Officers of the corporation are Wallace Wood, Paul Mann, Richard Harvey and Betty Koch, with the board of directors consisting of Lynn Degener, Don D. Wood, Dian L'Roy, Linda Ormsby, Jeannine Riemenschneider, Weldon Harbaugh and Art and Ann Steinaway. Future columns will give names of the various division chairpersons and information of their plans.

Our wonderful success in 1959 was made possible through a combination of full participation of everyone in the area and the great direction of the Rogers Co., of

## Twelve-Year-Old Jim Stock Rolls 248 Bowling Game

Twelve-year-old Jim Stock bowled his best game ever last week when he hit the pins for a total score of 248. Jim, who is the son of Mr. and Mrs. Thomas Stock of Musbach Rd., has been bowling for five years; three and one-half of those years with the Prep league at Chelsea Lanes.

According to Floyd Northrup, manager of Chelsea Lanes, Jim has averaged a score of 136 for 36 games and has bowled two other 200 games this year.

There is no doubt that Jim's score is top in his division and Northrup added, "It's the highest ones we have had here for many, many years in that category."

## Cagers Lose To Saline in Final Seconds

Spirit, spunk and hustle almost won the Chelsea Bulldogs their first Conference victory last Friday evening when they met Saline on the home courts.

However, the Bulldogs were not able to cash in on the score board in the last few seconds of play and lost by seven points to the Hornets, 69-62. Coach Tom Ballstere remarked that the most exciting thing about Friday night's game was that the Bulldogs never quit. "I have to praise the entire club for their spirit and enthusiasm."

The Hornets took off with the game during the first half, leading by a 16-point margin after two quarters of play. Then Chelsea's Bulldogs took the ball away to put in some great shots from the foul line and were able to close the gap to six points. The Bulldogs had the ball out of bounds and the opportunity to score with it during the last 40 seconds of play. Despite their spunk they were not able to put in the shots needed for a win.

They did, however, mark up one of their best foul line percentages of the year, shooting 70 percent. Shooting from the floor was not up to par as the Bulldogs could only manage 18 of 49, approximately 37 percent.

High scorers for Chelsea were Randy Guenther with 21, Randy Sweeney with 11 and Jerald Benjamin who put in 10 points.

Other Chelsea scorers were Tony Roberts and Pete Feeney with (Continued on page three)

## Hockey Team Blasts Strong Adrian Club

Chelsea High Schoolers hockey team continued their winning ways Sunday, Jan. 18 by defeating Adrian's Class "A" team, 3-2.

Adrian appeared overly confident early in the game but soon awoke to find they were in a hard, tough hockey game.

Chelsea never trailed as Greg Hastings scored twice and Bob Fisher once for the win.

Again it was Chelsea's defense, aided by their forwards backchecking, that enabled goalie Mike Check to hold Adrian's scoring down.

Chelsea's next game at Jackson will be against league leading Hanover-Horton Sunday, Jan. 25 at 6 p.m. A win Sunday would move Chelsea very close to first place.

Chelsea's High Schoolers Boosters Club will meet Thursday, Jan. 22 at 8 p.m., at the Gerald Quackenbush residence on Trinkle Rd. All hockey parents are urged to attend.



CHELSEA RECREATION COUNCIL PRESIDENT Ann Schaffner (center) accepts with pleasure a check for the sum of \$1,107 from Mary Jo Miller, finance chairman of the Chelsea Child Study Club. The check represents a major portion of the funds Child Study Club members raised at their Christmas Bazaar last Dec. 6. Looking on is club president Karen Galbraith. Also benefiting from Child Study Club monies are the Chelsea Area Historical Society, the Chelsea Community Chest, the American Cancer Society, and the March of Dimes.

Christmas Bazaar last Dec. 6. Looking on is club president Karen Galbraith. Also benefiting from Child Study Club monies are the Chelsea Area Historical Society, the Chelsea Community Chest, the American Cancer Society, and the March of Dimes.

## Child Study Club Contributes Sale Funds to Recreation Council

A check for \$1,107 was presented to a president of the Chelsea Recreation Council, Ann Schaffner, Tuesday evening by the finance chairman of the Chelsea Child Study Club, Mary Jo Miller. The check represents a major portion of the funds raised by club members at their Christmas bazaar held last Dec. 6.

"The Chelsea Recreation Council is very grateful for this very significant donation from the Chelsea Child Study Club," Mrs. Schaffner said. She added that the best use for the monies will be

determined by the Recreation Council at a later date.

However, possible uses being considered include assisting in the development of a recreation area west of the fairgrounds on Old US-12, obtaining additional leadership for a more comprehensive Chelsea Community Education-Recreation program or providing a broader instructional and recreational swimming program at the new community pool once construction has been completed.

"Whatever recreation use is decided upon, all residents of the Chelsea Community will benefit because of this generous gift from

the Chelsea Child Study Club," Mrs. Schaffner emphasized.

Funds raised at the Christmas bazaar were a result of the selling of hand-made items Child Study Club members began working on during the summer months. Under the direction of chairman Mary Jo Miller other committee members were Diane Borton, Marian Sprague, Neta Mills and Shirley Chapman.

The Child Study Club also made contributions to the Chelsea Area Historical Society, the American Cancer Society, the Chelsea Community Chest and the March of Dimes.









MEMBERS OF THE NBA PISTONS, coached by Ray Trevino, played their first set of games last Saturday as part of the Recreation Council's Biddy Basketball program. Kneeling, from left, are Dan Kleis, Pat Rady, Todd Hite, Daren Pier-son and Mark Brosnan. Standing, from left, Bob Trevino, Will Morely, Coach Trevino, Dave Nelson and Michael O'Quinn. Not present for the photo was Doug Burchett.

## Cagers Lose To Saline in Final Seconds

(Continued from page one)  
six points and Don Morrison with five. Dean Thompson had three points. Robards led the Bulldogs with the high number of rebounds snagging 14, while Randy Sweeney had 10. Jerald Benjamin had five.  
"It was a very close game," Tom Ballistrere said, adding "I think our boys are playing up to their capabilities now."  
The Bulldogs will host Lincoln Friday night to play the Southeastern Conference's best.

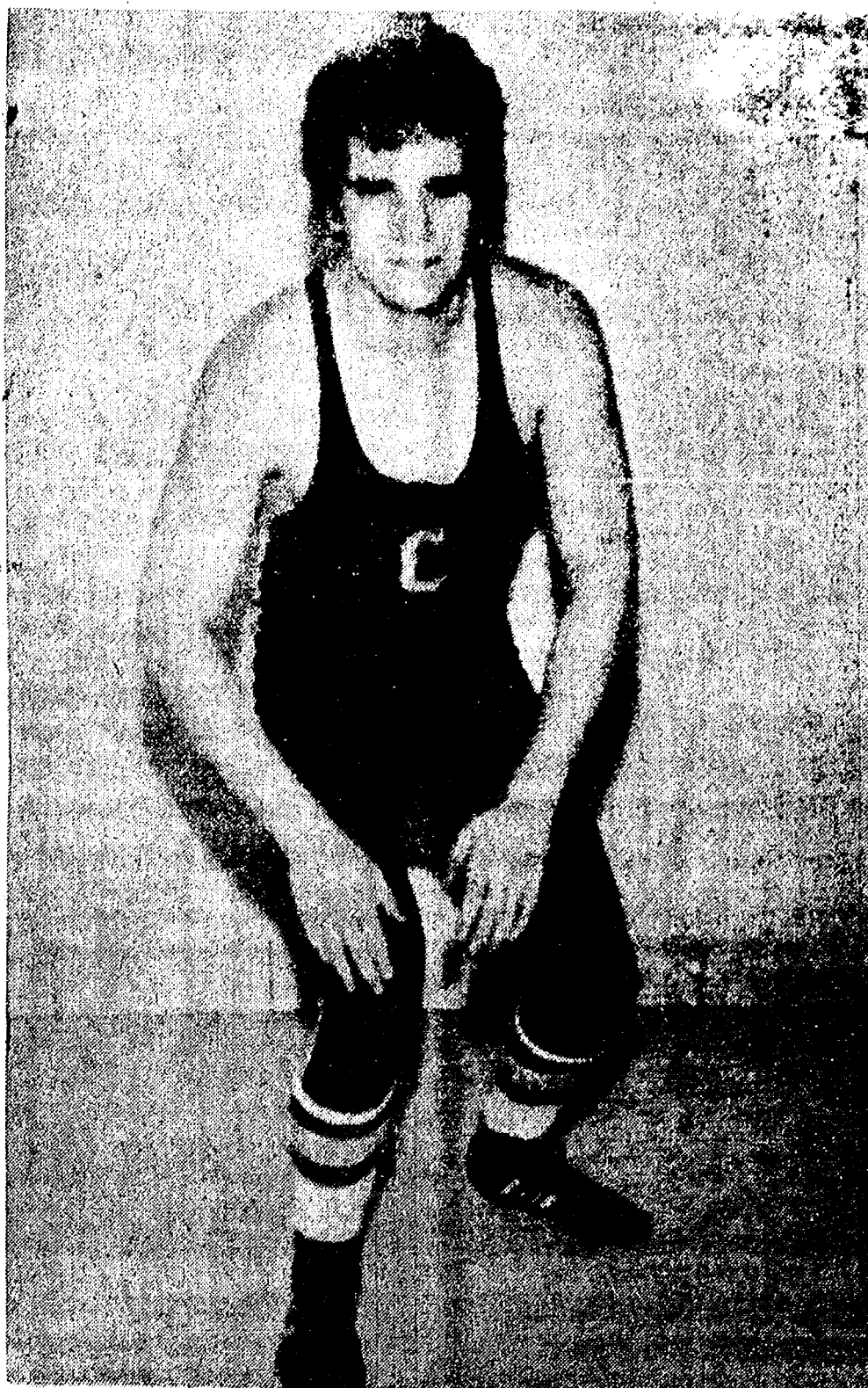
## Volleyball Team Loses to South Lyon

Practice began Dec. 1 for the 25 girls who were to become the Chelsea High school girls volleyball team. After many weeks of hard practice the girls played their first match Friday, Jan. 16. The opener was a league match which the JV's won and the varsity lost.  
The JV games were close. In volleyball, the winner of a match must win two of the three games. The first games were a decisive win by Chelsea, 15-8. South Lyon took the second game, coming from behind to win, 15-13. Chelsea then came back to take the match by winning the third game, 15-10.

The junior varsity team consists of Bonnie Boyer, Dawn Buchholz, Colleen Collins, Allison Hovater, Lori Inbody, Dawn Kilpatrick, Diane Ottoman, B. J. Parks, Julie Pennington, Sherry Pfeiffer, Thea Picklesimer, Denise Robbins, and Debbie Schantz. The team coach is Cheryl Turner.  
The varsity match was won by South Lyon. Chelsea won the first game decisively, 15-7. The team then fell victim to a large let-down, falling to South Lyon in the second and third games, 15-7 and 15-10.  
The varsity team is made up of Brenda Augustine, Leslie Clark, Kathy Dils, Marie Fahrner, Carrie Goins, Erin Headrick, Jolande Koole, Kim Moore, Karen Ottoman, Sue Schulze, Sue Skittenhelm, and Karen Tobin. Varsity team coach is Cheryl Turner.

Someone once said that a bigamist is one who loves, not wisely, but two well!

## Wrestler of the Week



SENIOR WRESTLER TIM REED at 155 pounds is now in his third season as a member of the CHS varsity grapplers. And a season that has gone quite well for Tim, who holds a record of 20-2. Remarking that one of his losses was to Ovid-Elsie, Tim said he is anxious for this Saturday's tournament when Ovid-Elsie wrestlers come to Chelsea. "I'd like to beat that guy this time," Tim said. Questioned about the individual versus team aspects of wrestling, Tim believes "you are working for yourself, but you are working for the team too." But what about during the match, Tim? Who are you thinking of then? Are you wrestling to win for Tim Reed or for Chelsea High school? Tim's answer: "You are thinking about yourself more, but in the end your win is the team's gain." Tim, who was a member of the varsity football squad last fall, says he plans to play on the CHS baseball team this spring. For next year? Plans to attend Michigan State... but nothing said about football, wrestling or baseball. Tim has two brothers, Doug and Greg. He is the son of Mr. and Mrs. John H. Reed.

FAST SPENDER  
Baltimore — A mild-mannered accountant told judge he had spent every cent of the \$1,585,800 he stole from his employers' in three years. Howard L. Raley said he had lost it all—and more—on a gambling spree.

## SOUTHERN BOY MANOR MOTEL

Efficiency Units - By Day, Week, or Month  
13190 M-52  
PHONE (517) 851-4213  
(2 miles south of Stockbridge)

### JANUARY SPECIALS:

## LITTLE ROOSTER RESTAURANT

Phone 426-8668 11485 N. Territorial Rd.  
THURSDAY, 5 to 9 p.m. - SPAGHETTI DINNER  
ALL YOU CAN EAT - \$2.35 per person

FRIDAY, 5 to 9 p.m. - OCEAN PERCH DINNER  
All the Perch You Can Eat - \$2.45 per person

In addition to our regular menu, we are now serving our own  
HOME-MADE PIZZAS after 5 p.m.

Open Tues., Wed. & Thurs., 4 to 10 p.m.  
Fri., Sat. & Sun., 11 a.m. to 10 p.m. Closed Mondays

## Gifts For All Occasions

- ★ Diamonds
- ★ Opals
- ★ Hallmark Cards
- ★ Watches
- ★ Clocks

★ Expert Watch and Ring Repair

20% OFF  
On All Jewelry

**LEWIS JEWELERS**

Maple Village Shopping Center  
Maple and Jackson Rds., Across from Fox Theatre  
Mon. thru Sat., 9:30 till 9:00  
Sunday 11:00 till 5:00  
Free Parking  
Ann Arbor 994-5111

## Bulldog Wrestlers Place 4th in Mason Tournament...

(Continued from page one)  
Lyon which was snowed out last night (Thursday) to wrestle with a tough Big Red squad.  
The Bulldogs' match with South Chelsea will travel to Milan to

# ICE SKATES

Men's - Ladies - Boy's - Girl's

## 1/3 OFF SALE

# CHELSEA HARDWARE

110 S. Main Your PRO Hardware Ph. 475-1121

FULL LINE SUPERMARKET  
BEER - WINE - LIQUOR  
AUTHORIZED  
FOOD STAMP STORE  
LOTTERY TICKETS  
MARATHON GAS PUMPS

# Jiffy market

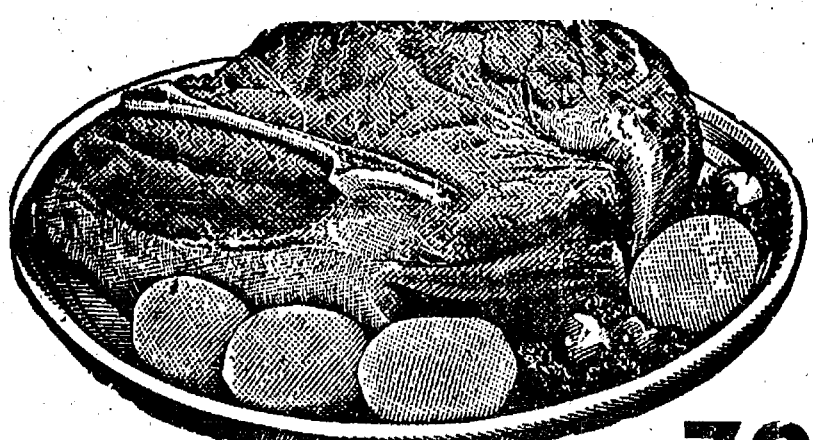
Big Enough To Serve You . . . Small Enough To Know You!

Open 7 Days A Week  
7 a.m. to 10 p.m.  
Corner Sibley & Werkner Rds.  
PHONE 475-1701

Sale Prices Effective  
Thursday, Jan. 22 thru Sunday, Jan. 25

## TOP VALUE FOODS - GUARANTEED SATISFACTION - COURTEOUS SERVICE

U.S.D.A. Choice



Blade Cut Chuck Roast . . lb. 79¢  
Center Cut Chuck Roasts lb. 89¢  
ARM CHUCK ROAST \$1.19 lb.  
ENGLISH ROAST \$1.19 lb.  
RIB STEAKS \$1.59 lb.  
BEEF STEW \$1.19 lb.  
GROUND CHUCK \$1.19 lb.  
GROUND ROUND \$1.29 lb.

MICHIGAN

PIONEER OR BIG CHIEF

SUGAR  
5-Lb. Bag \$1.09

MEAT DEPT.  
SPECIAL  
BEEF  
LIVER  
45¢ lb.

MEAT DEPT.  
SPECIAL NO. 2  
ECKRICH  
REG. OR BEEF

FRANKS  
1-Lb. Pkg. 89¢

KLEEN - MAID

BREAD

WAY BAKING CO.

3 1 1/4-Lb. Loaves \$1.00  
WHITE BREAD

PEPSI-COLA

12-Oz. Cans 8 pac \$1.29  
WOW!

VELVET  
CREAMY  
PEANUT  
BUTTER  
2-Lb. Jar \$1.29

## JIFFY MARKET IS CHELSEA'S MARKET

OPEN 7 DAYS 7 to 10  
U.S.D.A. CHOICE FRESH MEATS  
Large Dept. Produce Dairy Frozen Food  
LIQUOR BEER WINE GAS PUMPS  
Supermarket Groceries Borden's Ice Creams

POTATOES

MICHIGAN U.S. NO. 1, B SIZE

5-Lb. Bag 39¢

MEADOW DALE

POTATO CHIPS

SPECIAL 'JIFFY' 9-Oz. Bag 49¢

Jiffy Market - Chelsea's Milk Stop



FARM MAID

HOMOGENIZED

MILK  
gal. \$1.39

NEW ITEM!

YOPLAIT CO. OF OTSEGO

YOGURT

Large variety flavors

8-Oz. Crtn. 37¢ BUY 1 GET 1 FREE

Cold Weather Deal

CAMPBELL'S TOMATO SOUP 10-Oz. Can 17¢

CAMELOT SALTINES 1-Lb. Box 39¢

## JIFFY MARKET'S MARATHON GAS PUMPS

REGULAR GAS 55.9¢ PREMIUM LEAD FREE 57.9¢

PRICES INCLUDES ALL TAXES

Cold Weather Gas You Can Depend On!

MARATHON ALL SEASON  
10W-30 MOTOR OIL

ONE U.S. QUART 69¢

U.S.D.A. CHOICE BEEF

SIDES - FRONTS - HINDS  
WHOLE RIBS - WHOLE LOINS

CUSTOM CUTTING - WRAPPING - FREEZING  
QUICK SERVICE ON BUTCHERING  
YOUR BEEF OR OURS

MICH. State Lottery Tickets - Fresh Meats - Beer - Wine - Produce - Frozen Foods - Ice - Health and Beauty Aids - Groceries - Fresh Meats - Daily and Sunday Papers





## NORTH ELEMENTARY SCHOOL NOTES

### KINDERGARTEN

Teachers: Mrs. Michelson  
Mrs. White

Kindergarten classes had a delightful surprise when they came back from vacation. Mr. Mayer brought the Junior High School Pep Band to play for us. They introduced us to the instruments and played for us. We enjoyed all the music, especially the North School Pep Song and beating the drum. We are very happy they came.

We are learning to cut snowflakes to decorate our rooms.

Winter seems to be a time for colds and flu. Good health habits and good nutrition are important; so this is what we are discussing and trying to practice.

We are introducing initial letter sounds and finding pictures to represent each sound. Some children are writing their numerals as well as recognizing them.

We have budding architects and artists in our rooms who are producing some very creative pictures and projects.

Let's dress for winter and keep healthy.

### FIRST GRADE—

Teachers: Mrs. Packard  
Mrs. Peebles, Mrs. Stein

January is the winter month that we have a big science unit which includes winter clothes, winter sports, winter birds, weather—how to measure our cold days with a thermometer, and why the long, dark nights.

January math begins several new concepts. We are learning place value of tens and ones. One of our projects for this unit is to count the Campbell Soup labels our school has been collecting in piles of tens and graphing our findings on the chart by the office. We are counting by ones, twos, fives and tens. Time measurement and money are a few other math concepts to be covered.

Christopher Wroubel is our only birthday child for this month from all three 1st grades.

### SECOND GRADE—

Teacher: Mrs. Hakala

Danny Ellenwood and Renee Yeutter went to Florida with their families during Christmas vacation. They both visited Disney World. Danny saw the Ringling Bros. Circus Museum and Renee

saw Shamu at Sea World. Latisha Richardson visited relatives in Mississippi. Cynthia Poulter flew to Washington, D.C., and toured Fort McHenry and Old Ironsides. Orange, Red, Blue and Yellow Markers like their new reading books.

We are excited about starting cursive writing.

Teacher: Mrs. Walton

Now that 1976 is here, we are trying to get some information about America in its last 200 years. We are going to make a time line from 1776 to 1976 on our wall. Any pictures or magazine articles that would help us learn about people and inventions of our past would be welcome.

We are reading some new stories in our SRA. They have answer sheets to fill out after we read. Soon we will be doing these independently and going as fast as we want.

We have activity cards in our room now. We follow the directions on the cards; some are stories to write or silly animals to draw. We can really use our imagination.

In math we are working with tens and ones. In spelling the words are getting a little harder each week. This week we have words with long vowels and silent e.

Last Tuesday, Rich brought treats for his birthday. We played a game before we went to gym. We enjoyed our show day, and we like playing in the snow at school too.

### GIRL SCOUT NEWS



#### TROOPS 442, 82—

Troop 442 and Troop 82 have formed two groups to work on badges. One group is working on the requirements to complete the sewing badge during troop meetings and the other is working in the arts. Today the sewing group learned a new embroidery stitch and the arts group started paper mache sculpture and wood carving of their own design. The troop thought that they would like to see a roller skating party planned for an inter-troop project.

Amy Eisenbeiser, scribe.

#### TROOP 247—

Mrs. Catell took Brownie Troop 247 on a tour of C. S. Mott Children's Hospital where we saw a movie about a child who entered the hospital. Each Brownie received a hospital identification bracelet and a coloring book about Mott Hospital.

Before Christmas we went shopping for toys for the Social Service. We bought two toys from the money we earned doing jobs at home. On Dec. 1 we went caroling with Troop 88. Mrs. Jedele invited us in afterwards for hot chocolate.

We also made dried flower arrangements for the Methodist Home. These were put on the trays for the hot meal program.

Amy Smith, scribe.

#### TROOP 689—

Girl Scout Troop 689 met last Wednesday, Jan. 7 at St. Mary school. We made plans for our Valentine's Day party with our pen pal from the Methodist Home. Kathleen Morris brought treats.

Beth Heller, scribe.

No wonder that Washington has so many alcoholics—look at the fifties that have been taken in the last few years.

### LOSE UGLY FAT

Start losing weight today or money back. MONADEX is a tiny tablet and easy to take. MONADEX will help curb your desire for excess food. Eat less—weigh less. Contains no dangerous drugs and will not make you nervous. No strenuous exercise. Change your life... start today. MONADEX cost \$3.00 for 20 day supply. Large economy 120 is \$8.00. Also try AQUATABS: they work gently to help you lose water-bloat. AQUATABS—a "water pill" that works—\$3.00. Both guaranteed and sold by:

CHELSEA DRUG STORE  
101 N. Main St. - Mail Orders Filled

## JAYCEES WE SALUTE YOU

JANUARY 18-24 NATIONAL JAYCEE WEEK

# Our Jaycees. Their Actions Speak Louder Than Words

Just take a look around you.  
They've had a hand in the  
development of this community.  
And with their bright new  
ideas and hard work, they'll  
achieve a whole lot more to-  
morrow too! Let's honor all of  
these young people for the  
fine job they're doing. We're  
truly fortunate to have them.



INVERNESS INN  
WALLACE WOOD, State Farm Ins.  
VILLAGE BOOKS  
SPRAGUE BUICK-OLDS  
CHELSEA LANES  
BURGHARDT FUNERAL HOME  
THE CHELSEA STANDARD  
3-D SALES & SERVICE, Bud Ringe  
CHELSEA AUTOMOTIVE  
JIFFY MARKET  
CHELSEA FINANCE  
DAVE ROWE, Farm Bureau Ins.  
HARPER PONTIAC

CHELSEA MILLING CO.  
GAMBLES  
HEYDLAUFF'S  
PALMER FORD  
MERKEL HOME FURNISHINGS  
RICK'S MARKET  
FOSTER'S MENS WEAR  
CHELSEA DRUG  
STAFFAN FUNERAL HOME  
LLOYD BRIDGES CHEVROLET  
CHELSEA LUMBER  
THE PHOTO DEPOT  
VILLAGE MOTOR SALES  
GERRY RUSHING TEMP. HELP

## Coming Soon at THE CAPTAINS TABLE

EXPANDED DINNER MENU  
SERVING AFTER 5 p.m.

Including Our  
ALL-NEW SALAD BAR

Remember our  
Friday Night Special

SEAFOOD PLATTER  
LAKE PERCH, SHRIMP, SCALLOPS  
Served with potato, salad and roll

Only \$3.50

## The CAPTAINS TABLE

8093 Main St., Dexter

426-3811

Open Monday thru Wednesday ..... 6 a.m. to 9 p.m.

Thursday, Friday ..... 6 a.m. to 10 p.m.

Saturday ..... 7 a.m. to 9 p.m.

CLOSED SUNDAYS

## WASHTENAW COMMUNITY COLLEGE SATURDAY'S MECHANIC FOR MEN AND WOMEN 059

Meets Saturdays, starting January 24, 1976, Six (6) Weeks, 9:00-12:00 Noon. An introduction to the basic principles of operation and service of today's automobiles (NOT TO INCLUDE TUNE UP). Students will be able to perform service operations on their own vehicles, such as: Lubrication, Safety Inspection, and General Vehicle Upkeep.

Anyone interested in enrolling in this course must call the Automotive Service Center at 434-1555 and pre-register. Class size will be limited to 18. You must be pre-registered to be in the course.

### LOCATION

Washtenaw Community College  
Automotive Service Center  
5115 Carpenter Road, Ypsilanti, Michigan  
Phone: 434-1555

COST: \$20.00





### Modern Mothers Instructed in Craft Projects

For their first meeting of the new year, Modern Mothers Child Study Club divided up into small groups to learn and do a craft project. Macrame was taught by Terry Kamler, a former high school teacher. Her group met at the home of Sherri Plank with Kay Heller as co-hostess. Terry demonstrated the basic knots and had everyone try them out on a sampler. Then with their new skill, each worked on a plant hanger.

Lenore Matloff was hostess and June Flannigan co-hostess for a group learning about ceramics from Wanda Connor. Wanda presented the basic project, making a frame out of stoneware around a mirror. Then each one of the group created her own design and made a mirrored wall plaque.

Mary Plerson started her demonstration of "wheat cookery" by grinding her own wheat into flour. From this she proceeded to make and bake several loaves of whole wheat bread. Along with baking tips, discussion centered on food storage and nutrition. LaVonne Harris was co-hostess for this group.

The next meeting will be Tuesday, Jan. 27 at Beach Middle school. Phyllis Wykert will demonstrate folk dancing.

### WATERLOO LADIES AID

Waterloo Village United Methodist church Ladies Aid met Jan. 15 at the home of Zella LeVan for a noon pot-luck dinner. Eight members and three guests were present. Mrs. Lucille Bradley of Jackson, formerly from this area, attended. The meeting opened with prayer by the president. A movie was shown by the membership chairman, "Let's Think About It, You and I." The bible verse was Z. Four thank-you notes were read and a letter was read from Salem Grove church inviting the group to their prayer and self-denial meeting. Cards were signed and sent to the nine shut-ins. Roll Call is a psalm for next year or Bible verse A. The next meeting will be held at the home of Mrs. Mary Clark Feb. 11 with dinner at noon. The group closed with the benediction.

### SENIOR CITIZENS

A pot-luck supper held Jan. 16 at St. Mary's school celebrated the birthdays of senior citizens, Mrs. Katherine Dorer, Mrs. Viola Knoll and Mrs. Annette Vail. Nine members and one guest were present.

The next business meeting will be held Jan. 23 at 7:30 p.m. at St. Mary's school. Cards will be played after the meeting.

### DRIVING V. HEELS

Cleveland, O.—A Cleveland traffic expert claims that women motorists wearing high heels usually drive faster than men by 5 to 10 miles. Police Officer Joseph Zaranga advised the ladies to take off their high heels while driving for the sake of greater safety.

**LOVELY-KOCH:** Mr. and Mrs. Elwood Lovely of 519 Lane St. have announced the engagement of their daughter Lois to Leonard Koch. Mr. Koch is the son of Mr. and Mrs. Leon Koch of 14288 Old US-12. Both Miss Lovely and her fiancé are 1975 graduates of Chelsea High school. A June wedding is planned.

### Cleverdon - Gardner Engagement Told

Mr. and Mrs. Robert Cleverdon of Wellesley Hills, Mass., have announced the engagement of their daughter, Linda, to Thomas Gardner. Mr. Gardner is the son of Mr. and Mrs. Russell Gardner of RRI, Stanwood, formerly of Chelsea. The couple plan a June 12 wedding.

### SCHOOL LUNCH MENU

Week of Jan. 26-30

Monday — Hero burgers with cheese, hot dog buns, vegetable of the day, potato sticks, rosy applesauce and milk.

Tuesday — Ravioli, buttered peas and carrots, bread and butter, rocky road pudding, cinnamon cookie and milk.

Wednesday — Beef pot pie with pie crust topping, buttered corn, bread and butter, peach cobbler and milk.

Thursday — Hot dogs; buns, trimmings, soup of the day, crackers, ginger bread with topping and milk.

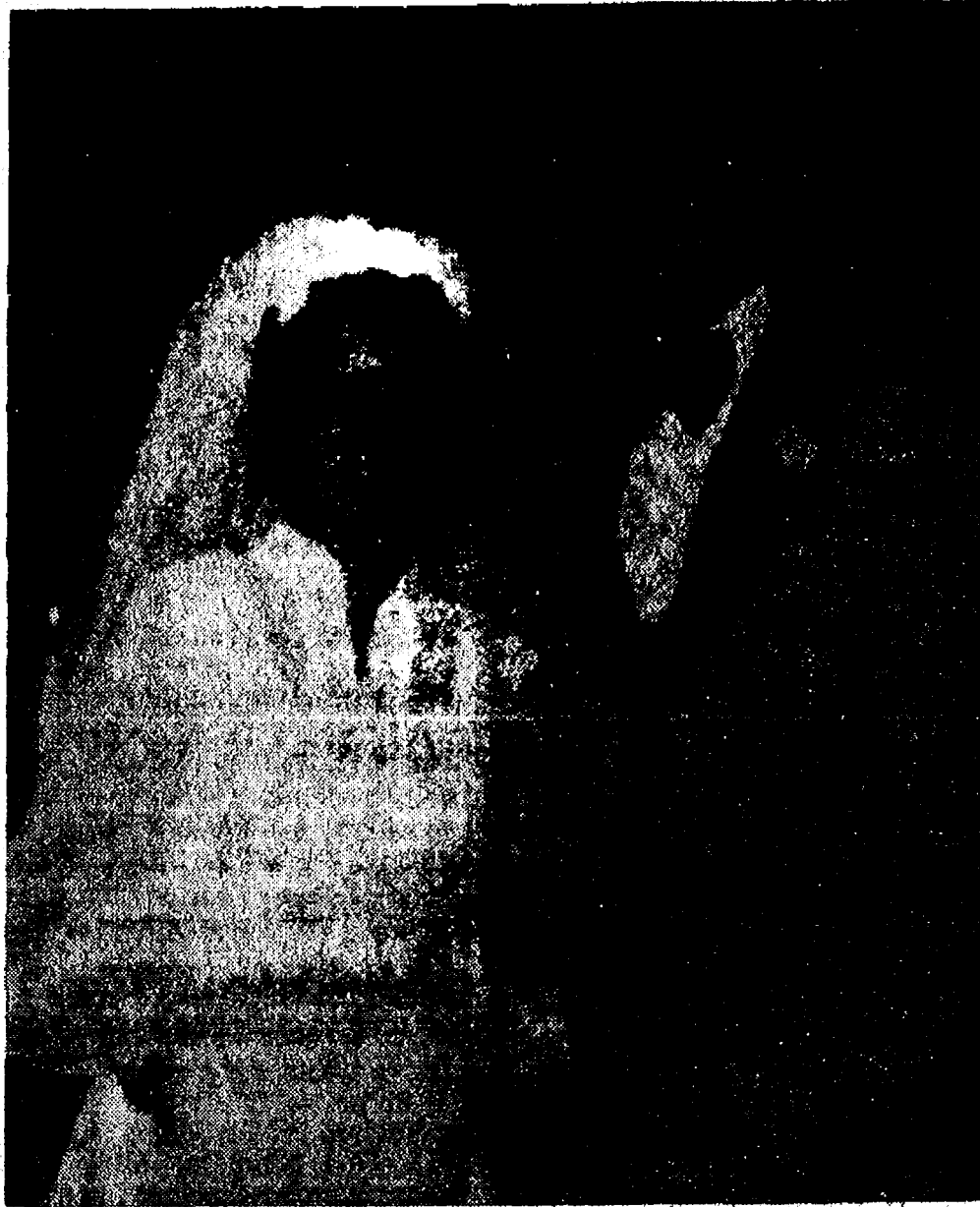
Friday — Pizza pie slice, buttered peas, bread with peanut butter, juice, Jell-O with fruit and milk.

One of the best ways for sick people to get well is to become convinced that they can get well.

### Magic Mirror Beauty Salon

Open Tuesday thru Friday  
9 a.m. to 9 p.m.  
Saturday, 8 a.m. to 3 p.m.

PHONE 665-0216



Mr. and Mrs. Gary David Stein

### Beth Ellen Cochran, Gary Stein Wed in Monticello, Ind., Church

Beth Ellen Cochran became the bride of Gary David Stein at an afternoon ceremony Dec. 27, at the Monticello United Methodist church, Monticello, Ind.

The former Miss Cochran is the daughter of Mr. and Mrs. Kenneth B. Cochran of Monticello. Mr. Stein is the son of Mr. and Mrs. Roger P. Stein of 2470 Crooked Lake.

Officiating at the 1 p.m. ceremony was the Rev. Donald Ashley. Organist was Miss Cathy Sebold, the bride's cousin of Ann Arbor. Vocal selections were sung by Miss Kathy Anderson on the guitar and Steve Sebold.

Serving the bride as maid of honor was her cousin, Gail Sebold of Ann Arbor. Bridesmaids were Miss Kris Schlegelmilch of Monticello; Mrs. John Scott of Yeoman, Ind.; Mrs. Richard Martin of Muncie, Ind.; Mrs. Ralph Daily of Elkhart, Ind. and Miss Karen Stein, the bridegroom's sister, of Chelsea.

The bridegroom's cousin, Miss Melinda McCalla of Chelsea was the flower girl. Cousin of the bride, Tony Cochran of Lafayette, Ind., was the ringbearer.

Steven Sebold of Ann Arbor served the bridegroom as best man. Paul Stein and Dale Stein of Chelsea.

### Four from Chelsea On Honors List at Central Michigan

Four students from Chelsea have been named to the academic honors list at Central Michigan University for the fall semester of 1975. In addition, John C. Wood of 646 Flanders has been honored by CMU for achieving a straight "A" average for the semester.

Named to the academic honors list are Debra J. Barker of 19819 Old US-12, a senior at CMU; sophomores Tim A. Eder of 19699 Old US-12 and Jeffrey N. Marshall of 19595 Old US-12 West and freshman Gary A. Wellnitz of 519 McKinley.

To be eligible for the academic honors list a student must have a cumulative grade average of "B" or better for his or her entire college career.

The straight "A" list is based upon fall semester grades without regard to cumulative averages.

### STYLE SHOP

207 1/2 S. MAIN  
475-8400

Tues., Fri., Sat. .... 8 to 5  
Wed., Thurs. .... 8 to 8

JUDY, WANDA  
SHIRLEY and ROSEMARY  
Feb. Permanent Special

### Under New Ownership Carolyn Helfrich

### HOUSE OF ORIENT BEAUTY SALON

107 W. MIDDLE ST.

### January Special!

All Gold Waves and Uniperms - \$17.00  
(includes cut and set)

Experienced Hairdressers in  
latest cuts and styles.

Stop by or give us a call at 475-8196  
Carolyn, Cathy and Charlotte  
Watch for further specials!

## School Board Briefs

At a regular meeting of the Chelsea School Board Monday evening, Jan. 19, present were president Haselschwardt, trustees Schafer, Stirling, Hodgson, Tobin, Superintendent Cameron, Business Manager Mills, Principals Lane, Conklin, Wojcicki and Benedict. Guests present were Nancy Gilbreath, Bob Beaudoin, Ken Tillman, Cathy Hamilton, Joe Rossi, Bill Chandler, Ann Schaffner and Ruth Leach.

The meeting was called to order at 8:10 p.m. by President Haselschwardt.

The minutes of Jan. 5, were approved as presented.

The request of Nancy Gilbreath for a leave of absence for 1976-77 was approved.

The board discussed a proposal from the Student Council to create a smoking area at the high school. The Student Council is to bring additional information to the board at a future meeting.

The 1976-77 Instrumental Music program was approved as revised.

Ann Schaffner and Bob Beaudoin discussed the proposed use of the swimming pool by the Recreation Council in their program. The board reiterated that the pool is a community pool and the greatest possible use is to be made of the facility. Business Manager Mills and Principal Conklin are to work with the Recreation Council to plan the use and operation of the pool.

Mrs. Ruth Leach discussed the possibility of transportation for students on N. Freer Rd. A report is to be made at a future meeting.

The contracts of Linda Hiatt and Esther Buch were signed.

The board approved the hiring of the Michigan Association of School Boards negotiating service for contract negotiations this year.

Payment of 1974 Building Site bills of \$187,275.82 was approved.

The 1976-77 Operating Budget was approved.

Supt. Cameron reported that March 22, has been approved as the Special Operating Millage Election date.

### Art Association Hosting Series of Luncheons

The Ann Arbor Art Association will host a series of Monday brown bag luncheons, beginning Monday, Jan. 26, from 12 to 1 p.m.

The public is invited to join with members and artists in discussions of the arts and artists in the community.



TINA CASE

### Tina Case Named 'Good Citizen' By Ypsilanti DAR

The daughter of former Chelseaite, Dennis Case, is among six high school seniors tagged for Good Citizen awards in Ypsilanti high schools.

Named a DAR Good Citizen at Calvary Christian Academy by the Ypsilanti Chapter of the Daughters of the American Revolution is 17-year-old Tina Case.

Tina, the oldest of four children in the Dennis Case family, 1237 Commonwealth Ave., Ypsilanti, has attended Calvary for three years. She was chosen an outstanding student last year and has been a "student of the week." She is also on the school's yearbook staff. She has been a church clerk at New Hope Baptist church and says a college education depends on finances; she may work for a year first and then major in elementary education. She hopes to teach in a Christian school.

All six girls will be honored by the entire DAR chapter at its Jan. 18 program at the Ladies Literary Club House.

Fashions for women are still in what might be termed the "look-and-see" era.

### Special Ed Class...

(Continued from page two)

Performing in diving were Glenn Passow (front and back dives), John Winans, Ron Miller, Patty Brady, Kathy Buck, Mary Landwehr, Kathy Young, and Chris Williams. Lary Hafner also performed.

Mrs. Porath felt her students should be especially commended

for their diving performances due to the fact that the pool at High Point malfunctioned and the water temperature was only 5 degrees.

Because of the success of the class, CHS special students have been asked to hold clinics at several elementary schools in Ann Arbor to prepare the children for the County Special Olympics April 30. Their first clinic will be held at Northside Elementary school.

## CARPET REBIRTH

Give your carpet a new lease on life  
by cleaning it regularly.

## JET SPRAY CARPET CLEANING

Use Your Phone 761-3025 or 475-1509  
BankAmericard Ask for John Lixey.

## CLOTHING SALE

20% to 50% Off

### STORE HOURS:

Monday thru Saturday .... 8 a.m. to 5:30 p.m.  
Friday ..... Close at 6 p.m.

## STRIETER'S MEN'S WEAR

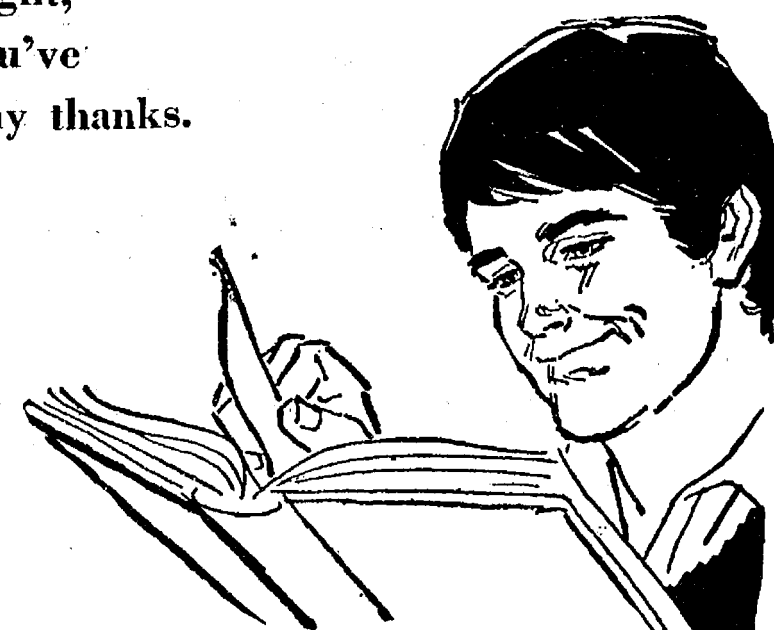
"The Place To Go for Brands You Know"

## We Salute You, Jaycees!

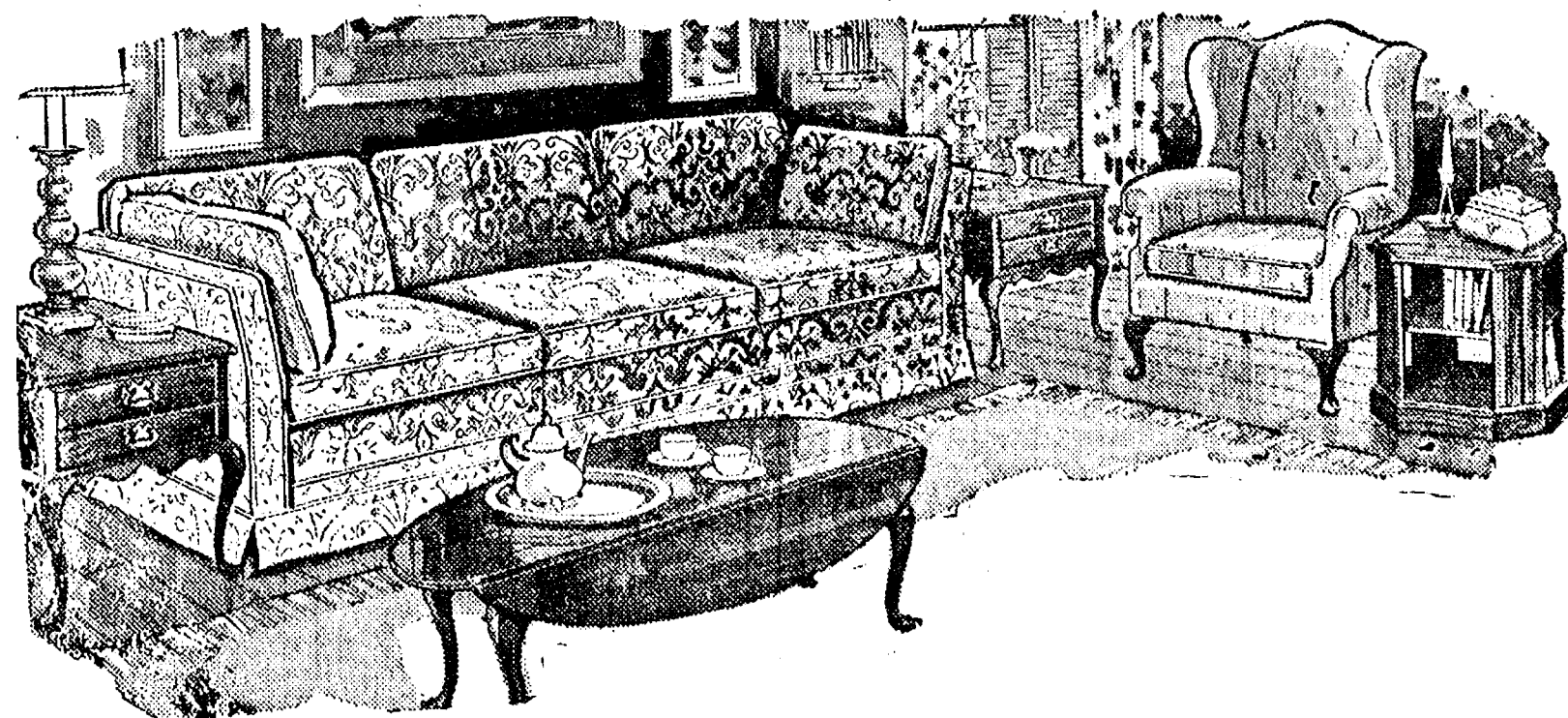
You're what's happening today! We  
applaud your drive and foresight,  
and the great achievements you've  
made in this community. Many thanks.



Chelsea Jaycee  
Auxiliary



## STORE-WIDE SALE NOW THRU JAN. 31



ALL STOCK FURNISHINGS REDUCED

15% to 50%

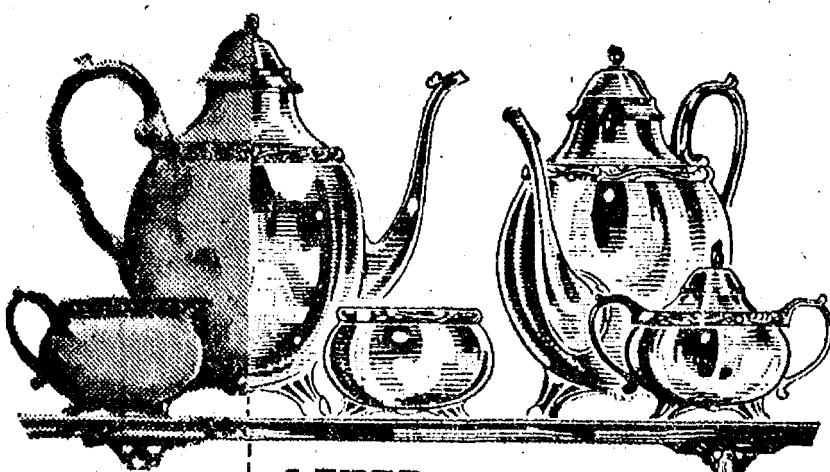
SPECIAL ORDERS LESS 10%

## SAVE ON CARPET & RUGS

Merkel

HOME FURNISHINGS  
Phone Chelsea 475-8621

## SILVER REPLATING REDUCED 20% LAST 5 DAYS



Make this YOUR Silver  
Investment for the Future!

Every Item Replated at Sale Prices

Since the value of old silverplated items continues to soar... this is an excellent time to take advantage of these low, low prices to have your worn silverware, antiques and family heirlooms replated like new. These pieces are now more valuable than ever and make wonderful gifts. All work HEAVILY SILVERPLATED by our skilled silversmiths and Sale prices apply to ALL pieces.

For Instance	Article	Reg.	Sale Price
	Teapot	\$46.95	\$37.56
	Creamer	24.50	19.60
	Candlestick (per inch)	2.65	2.12
	Sugar bowl	26.95	21.56
	Trays (per sq. in.)		.210 .168

### OUR NEW REPAIR POLICY

\*FREE DENT REMOVAL and straightening on all items we silverplate.  
\*ONLY \$12.95 FOR ANY AND ALL ADDITIONAL REPAIRS, no matter how extensive, on any piece we silverplate. Includes soldering broken handles, legs, knobs, etc. (Only exceptions are for furnishing new parts).

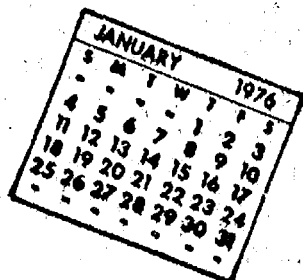
SALE ENDS JANUARY 31  
BRING IN SILVER TODAY!

WINANS JEWELRY

We Close Friday at 6 p.m.



## Community Calendar



Scholarship Committee Monday, Jan. 23, 7:30 p.m. in the home economics center at the high school.

Town and Country Child Study Club, Jan. 27, 7:30 p.m. at the home of Cindy Colvin. Program, "Group Homes." Guests are welcome.

Chelsea-Dexter La Leche League will meet at 8 p.m. Jan. 20 at the home of Mrs. Laurie Sgraves, 13453 Riker Rd., Chelsea. Topic, "The Advantages of Breast Feeding to Mother and Baby."

Waterloo Village United Methodist church will show "The Rapture," Jan. 23 at 7 p.m. at the church. The public is invited to attend.

Lecture-discussion on alcoholism weekly, Thursdays at 7:30 p.m. Chelsea Community Hospital. Sponsored by the hospital's alcoholism therapy program and the Washtenaw Council on Alcoholism. Further information phone Carl Asher at 475-1311 or Donna Casswell at 971-7900. Public invited.

Chelsea Home Meal Service delivers one hot meal a day to elderly and disabled living in the Chelsea area. For information call 475-8014 or 475-2923.

Tours of Chelsea Community Hospital and surgical center are available for small groups. To arrange for tours, call: Neva Jordan, 426-8027, or Dorothy Miller 475-8020.

The Bookmobile from the Washtenaw County Library will stop weekly on Wednesdays from 4:15 to 4:45 p.m. at the North Lake Methodist church. From 5 p.m. to 5:30 p.m. Wednesdays, the bookmobile will be at the Cavanaugh Lake Store.

McKune Memorial Library Children's Story hour will resume Jan. 7 from 9:30 a.m. to 10:30 a.m. every Wednesday for children three and four years old.

Pap tests are free for all area women, Tuesday mornings, at St. Joseph Mercy Hospital, Ann Arbor. Call American Cancer Society office, 668-8857 for appointment.

Chelsea Co-op Nursery applications for 1976-77 classes are now being taken. For information, call Jeannette Mull, 426-8822 or Leslie Bowers, 475-1401.

Western Washtenaw Area Association, Huron Valley Girl Scouts, meets Thursday, Jan. 29, 7:30 p.m. Church of Christ, 13661 Old US-12, Chelsea.

Modern Mothers Child Study Club Tuesday, Jan. 27, 7:30 p.m., Beach Middle school cafeteria. Casual dress and gym shoes. Program: folk dancing, instructed by Phyllis Wykert. Refreshments following at the home of Amy Vaught.

Chelsea Child Study Club 8 p.m., Jan. 27 at the Methodist Home for a quilting demonstration.

Lyndon Township Planning Commission meets the second Thursday of the month at the Town Hall at 8 p.m.

Humane Society of Huron Valley has dogs and cats for adoption. Owners may reclaim their lost pets. Phone 662-5585. Open from 9 a.m. to 5 p.m. daily; Sunday, 1 p.m. to 5 p.m. 100 Cherry Hill Rd., quarter-mile south of Plymouth Rd. at Dixboro.

TOPS (Take Off Pounds Sensibly) is back in Chelsea. Come join us. What can you lose, but unwanted pounds. For information call 475-8139 or 475-8905.

Lyndon Township Board meets the third Thursday of the month at the Town Hall at 7 p.m.

Inquiries regarding the Chelsea blood bank may be directed to Harold Jones in the event that Mrs. Dudley Holmes is unavailable, or to Robert Moyer, American Red Cross in Ann Arbor, 971-5300.

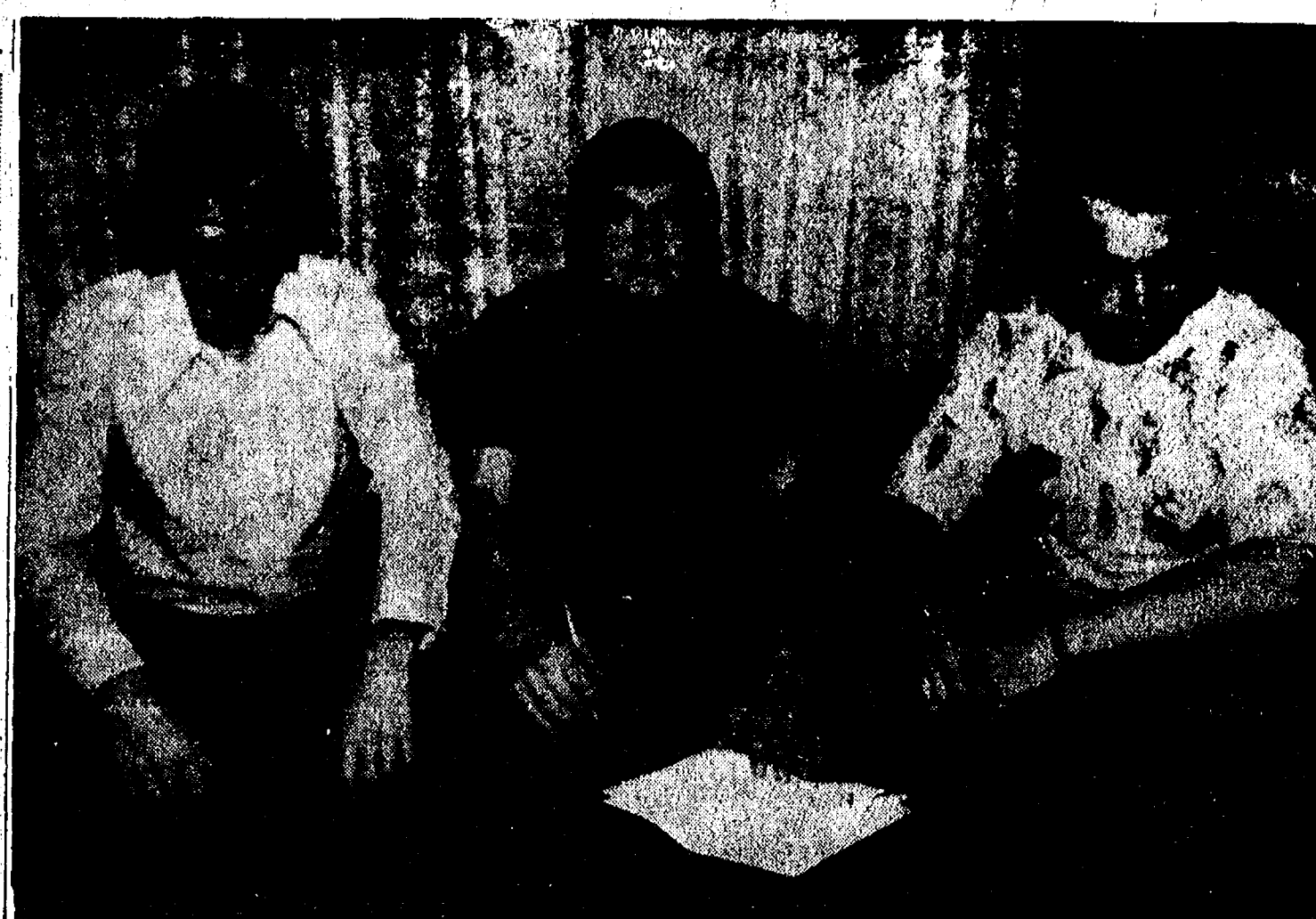
Sylvan Township Board meeting the first Tuesday of the month, at 7 p.m., at Sylvan Township Hall.

Chelsea Jaycees first Tuesday of every month. Board meeting, fourth Tuesday of every month at Chelsea Lanes. Meetings begin at 7:30 p.m., guests are welcome.

American Legion and Auxiliary hospital equipment available by calling Guy Freysinger at 475-1961.

AA and Al-Anon meeting, Monday evenings at Chelsea Hospital, 8:30 p.m. Closed meetings.

Lima Township Board meets the first Monday of every month at the Lima Township Hall, 11452 Jackson Rd., at 8 p.m.



**MAKING IT OFFICIAL:** Chelsea Village President Hal Pennington signs a proclamation for Jaycee Week which officially began Jan. 18 and extends through Jan. 24. Looking on are Bob Pratt (left), vice-president of the Jaycees and chairman of Jaycee Week, and Mitch Zink (right) Chelsea Jaycee president.

## 22 Biddy Basketball Start Play Saturday

Biddy Basketball jumped off to a good start last Saturday morning, as 22 teams of players rallied for their first games of the season. The following list is a tally of first round scores.

**NBA—**  
Jazz 21, Cavaliers 19.  
Bucks 25, Pistons 18.  
Bulls 22, Celtics 18.

**ABA—**  
Colonels 30, Warriors 14.  
Pacers 20, Sails 18.  
Squires 18, Braves 14.

**WBA—**  
Capitols 12, Lakers 6.  
Knicks 22, Suns 12.  
Hawks 6, Kings 6.

Rockets 14, Bullets 12.  
All Biddy basketball games have been canceled for this Saturday, Jan. 24 because of the wrestling tournament being held at the high school. Biddy basketball play will resume Saturday, Jan. 31.

## DEATHS

## DEATHS

**Aleck W. Jopp**  
Services, Interment Here For Detroit Resident

Aleck W. Jopp of 23093 Norfolk, Detroit, died Jan. 15 at the Arnold home in Detroit. He was 70 years of age.

He was born Feb. 8, 1896 in Detroit, the son of William and da Naysmith Jopp. He was married to the former Marie Wackennut. She survives.

In addition to his widow, he is also survived by one daughter Mrs. Don (Mary) MacDuff of Detroit and two grandchildren, Lawrence and Susan MacDuff.

Funeral services were held Saturday, Jan. 17 at 1 p.m. at the Staffan Funeral Home with the Rev. R. J. Ratzlaff officiating. Burial followed in Oak Grove Cemetery.

## Beach Cagers...

(Continued from page one)

game, could only manage to put in 11 points this time.

Starters for the junior high team are: Carl Simpson, Mike Wade, John Riemenschneider and Jim Stock.

Billed as one of the best junior high teams ever, Johnson said that what makes his team strong is their good defense. Their only loss this season, to Ypsilanti-Lincoln by three points, they hope to revenge later this year when they will play the team again.

Johnson has been coaching the junior Bulldogs for six years.

## Bicentennial Plans

(Continued from page one)

walk days and art fair, continuing through the next week with our own programs and spectacle and through Aug. 28. In co-operation with the Chelsea Community Fair. Of course, there will be promenades and caravans, etc., before these dates.

To make any celebration successful, it will take full participation of everyone and we hope you will all volunteer to get involved. You will be surprised how gratifying and how much fun it is. For more information call 475-1502. Watch for our column next week.

## Rita Conk Retires After 30 Years At Central Fibre

After 30 years with Central Fibre Products, Mrs. Rita Conk retired from the company Jan. 1. She most recently held the position of machine operator. Mrs. Conk was presented a check from the company for her years of service from plant superintendent, Miles Smith and a Bible from Richard Schubert, chairman of Central Fibre Products unit of UAW Local 437.

## CLOTHING SALE

20% to 50% Off

STORE HOURS:

Monday thru Saturday ... 8 a.m. to 5:30 p.m.

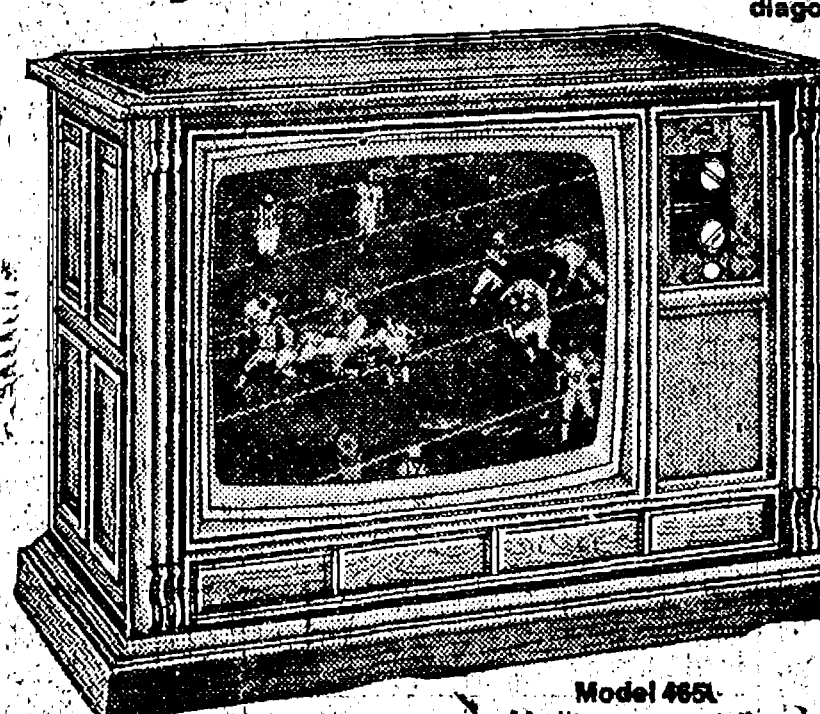
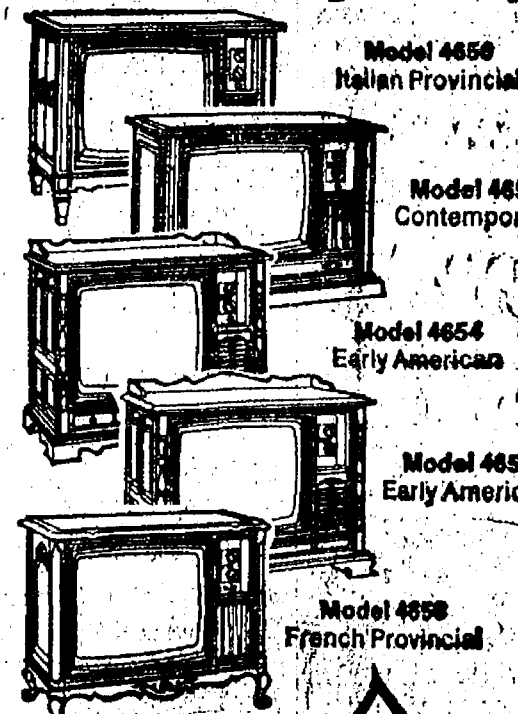
Friday ... Close at 6 p.m.

## STRIETER'S MEN'S WEAR

"The Place To Go for Brands You Know"

## SAVE \$100

Easy-on-your-eyes Videomatic® 25" Color Consoles



Magnavox Videomatic was the first color TV to adjust its picture to changing room lighting—automatically. Its electronic "eye" sees changes in room light and automatically adjusts the picture... so it never glares in a dark room, never washes out in a light room. You'll also enjoy energy-saving 100% solid-state circuitry... bright, sharp pictures on the Super Bright Matrix Tube... great sound realism from a highly efficient speaker... plus extra testing for extra reliability. And, of course, the beauty of Magnavox fine furniture craftsmanship.

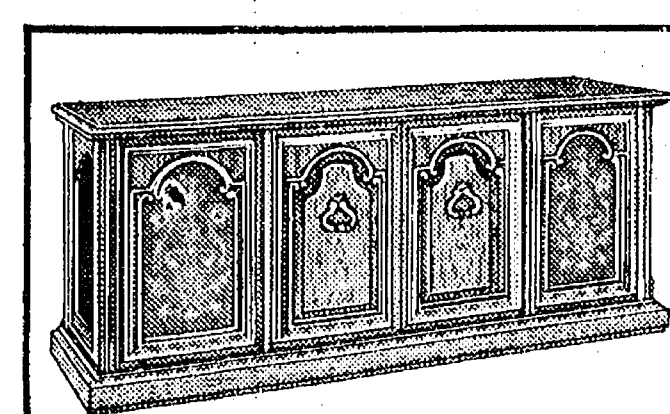
Your Choice

now \$649

# 21<sup>ST</sup> Magnavox ANNUAL SALE

LIMITED TIME ONLY!  
ENDS FEB. 23rd 1976

SAVE UP TO \$100

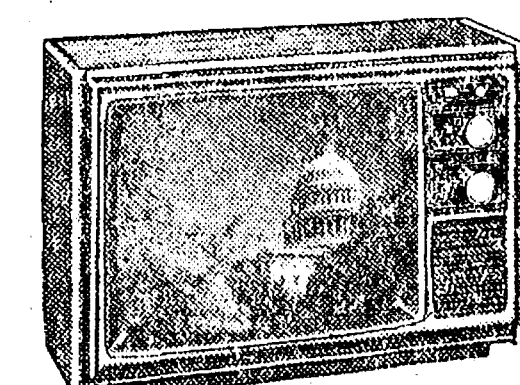


Model 6920—Italian Provincial

SAVE \$100

**Magnificent Stereo Console**  
This beautiful Magnavox has a full-featured stereo FM/AM radio, 3-speed automatic record changer, built-in 8-track tape player... plus a deluxe 3-way-speaker system with two side-fired air suspension 12" Bass Woofers, plus two front-fired 6" Mid-Range Speakers and two 3 1/2" Tweeters. Two styles available.

now \$750



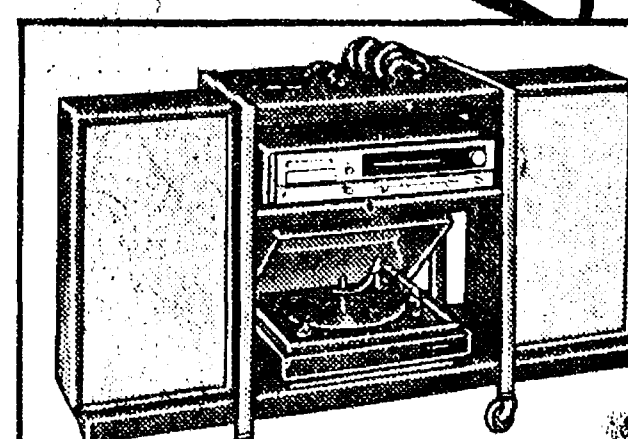
Model 4320

SAVE \$60

19" diagonal Color Portable

Once you check out these features, we think you'll agree this Magnavox is a value... even without its Annual Sale savings! Automatic fine-tuning for accurately tuned UHF or VHF pictures, energy-saving, 100% solid-state circuitry, plus the Precision In-Line Tube System for really bright, sharp pictures.

now \$419<sup>95</sup>



Model 2009

SAVE \$100

6-piece Audio Center

...includes a solid-state Stereo FM/AM radio, built-in 8-Track Tape Player, full-size automatic Record Changer (with dust cover) and two air-suspension speaker enclosures. Even headphones and a mobile cart.

now \$219<sup>75</sup>

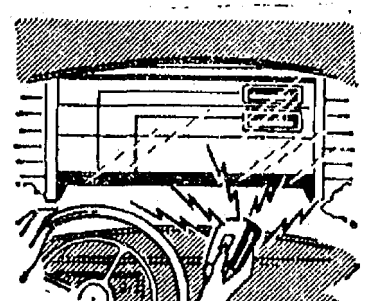
**Magnavox**  
Quality in every detail

# HEYDLAUFF'S

113 N. MAIN ST.

Phone 475-1221

## DOOR-VALET AUTOMATIC GARAGE DOOR OPENER



Keeps you out of ICE-COLD • SNOW • RAIN • Just push the button — Garage door opens and closes automatically. Eliminates getting in and out of your car in bad weather or in the dark.

Specially Priced Thru Jan. 24th

## ★ STANDARD OPERATOR:

- G.E. 1/4 h.p. Capacitor Motor
- Door reverses when it meets an obstruction
- Light is on when door is open - off when closed
- Interior wall control
- Full year warranty

With One-Car Control . . . \$117<sup>50</sup>  
(2nd-Car Control - Add \$19.50)

## ★ DELUXE OPERATOR

All Standard Features - Plus:

- G.E. 1/3 h.p. Capacitor Motor
- Dual light stays on 2 minutes after door opens or closes - then turns off automatically
- Exterior key-switch control

With One-Car Control . . . \$134<sup>30</sup>  
(2nd-Car Control - Add \$19.50)

Easy 6-Step Installation!

**CHELSEA LUMBER**

## Letters to the Editor

To the Editor:

The storm of the 13th has come and gone, and more snow yet to follow. This would be a good time to thank all those hard-working village employees, along with some private citizens, who did such a good job of snow removal.

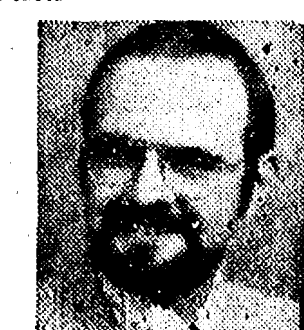
Sometimes we complain—that is every citizen's right—but with that right goes an obligation to praise when praise is due. And it's due these folks. Many thanks.

Dan Knight.

Subscribe today to The Standard!

## You and Your FARM

... one of the reasons we're in business. The first with a Farm-owners policy, the first with Agropian, the first with an environmental protection endorsement. All at a fair price. Check the facts



**DAVE ROWE**  
107 1/2 S. Main  
Ph. 475-8065

**FARM BUREAU INSURANCE GROUP**  
Farm Bureau Mutual • Farm Bureau Life  
Community Service Insurance • Community Service Acceptance





CAVALIERS BIDDY BASKETBALL team is coached by Jim Marshall. Kneeling, from left, members of the team are Steve Cattell, Shannon Carpenter, Andy Castle and Richard Gaul. Standing, from left, Troy Schiller, John Welton, Coach Marshall, Jeff Rowe and John Seyfried. Not present for the photo were Steve Grau and Mike Stebelton.

## Volleyball Teams Win Over Pinckney

Monday, Jan. 19, at Pinckney High school, the Chelsea High volleyball teams played their second matches of the 1976 season. The JV's won, 15-8, 13-15, and 15-10, to down the Pinckney Pirates. The second game was close but the Pirates came from behind to win the game. Then Chelsea took command once again in the third game. The win gives the JV team a 2-0 record.

The varsity match gave the Chelsea girls their first win of the season. Chelsea took command of the game at the beginning, downing the Pirates, 15-5. Pinckney (Continued on page 10)

## PROCLAMATION

WHEREAS, the Civic Bodies in Service Organizations of our community and the Departments of the Local Government recognize the great service rendered to this community by the Chelsea Jaycees, and

WHEREAS, The United States Jaycees, the Michigan Jaycees, and its affiliated local organizations have set aside the week of January 18-24, 1976, to observe the founding of the JAYCEES and

WHEREAS, this organization of young men have contributed materially to the betterment of this community throughout the year;

THEREFORE, I, Hal Pennington, president of the village of Chelsea, do hereby proclaim the week of January 18-24 as JAYCEE WEEK and urge all citizens of our community to give full consideration to the future services of the JAYCEES.

Dated: January 15, 1976.

Hal Pennington  
President, Village of Chelsea

## Kiwanis Travelogue Scheduled Saturday



JAY GIERKEY

### Applications Available For Education Grants

Chelsea High school counselors have just received applications for the Basic Educational Opportunity Grant Program.

Students who plan on furthering their education after graduation from Chelsea High school and who have or might have apparent economic need may pick-up applications in the high school counselor's office.

Grants are not restricted to institutions within the state of Michigan nor to public institutions.

Maine, New Hampshire, Vermont, Massachusetts, Connecticut and Rhode Island are the historic and beautiful states that compose Jay Gierkey's Jan. 24 travelogue entitled, "New England R.F.D." Viewers who hold tickets to the 8 p.m. showing in the Chelsea High school auditorium will roam with Gierkey through New England seeing such sites as lobster fishermen, sailing ships, silversmiths, skiing and the world's champion sardine packer. Also included in the cinema visit will be Mt. Washington, Mt. Snow, Quoddy Head Light, Sturbridge Village and Cape Cod National Seashore.

Gierkey, a cinematographer and Charlene Gierkey, a journalist, have decided to make the less populated areas of the world their beat. Everywhere they go documenting the remote areas of the world, they always end up pitching their tent in some fjord, on some barren lava flow or on the arctic ice three hours from the North Pole.

A native of Indiana, at age 14 he was the youngest licensed pilot in that state. Jay had his flying license long before he had a driver's license. He served in the U.S. Army as an air crew member in the Far East and participated in various rescue missions while in the Army.

No stranger to the film business, Jay chalked up experience in television films and commercials while employed at a large motion picture production company in Indianapolis, Ind. He holds a radio license and has taught broadcasting to inmates at the Pendleton Reformatory in Indiana.

His wife shares his enthusiasm for hiking, climbing, gliding, flying and skiing, but writing is her particular interest. In 1972 she won the Associated Press Award for the best news story of 1972 by a woman in Indiana.

The Gierkeys not only try to provide entertaining films but films of educational worth. They research their selected area as fully as possible before traveling. Then they take a journalistic approach, not sensationalizing, but employing in-depth reporting to get as accurate a picture as possible.

Both Charlene and Jay enjoy making films more than any other interest. When they are not searching the exotic corners of the world, they make their home at Sugar Loaf Village near Traverse City.

### Snowmobile Festival Set For Sunday

A "Family Snowmobile Festival," sponsored by the Inverness Snowmobile Club has been scheduled for Sunday, Jan. 25 on North Lake. Events include drag races, cross country, blindfold ride and a snowmobile rally. The festival will end at the club camp fire for a hot dog roast.

Registration will start at 10 a.m. for members only. Trophies will be presented to first place in each of the class events.

New members welcomed into the snowmobile club this season are Edward Blaklaw, David Fairbanks, Ron Mast, Robert Schmidt, Tom Briggs, Andy Fleischmann, Glenn McDowell, Les Keleman and Doug Robeson.

A new club reporter will be assigned at the next snowmobile meeting, Jan. 27 as Nancy Thams has resigned.

### FARLEY

CONSTRUCTION  
522 HOWARD RD.

ADDITIONS - REMODELING  
CONCRETE WORK  
REPAIRS

475-8265 or 475-7643

Second  
Section

## The Chelsea Standard

Pages  
7-12

CHELSEA, MICHIGAN, THURSDAY, JANUARY 22, 1976



WBA BULLETS Biddy basketball team coached by Anthony Houle (standing left) and Dave Watson are, kneeling, from left, Mike Coffman, Jim Cook, Chris Wroubel and Chris Taylor. Standing, from left, Dennis Parsho, Brett Knickerbocker, Dave Barels, Brent Peebles and Chris Herter.

## Jaycees Observe Anniversary

As the U. S. Jaycees approach their 50th anniversary, being celebrated during Jaycee Week, Jan. 18-24, the local Jaycees have written this story so that the citizens of Chelsea might better understand the purpose, history and goals of the organization.

By Sandy Brown

If you know nothing about the local organization, one of the first questions one might ask is "What are the Chelsea Jaycees?"

The Chelsea Jaycees are a group of wide-awake young men who are eager to get ahead in life, willing to devote a part of their spare time to activities being sponsored by the local chapter.

The Jaycees are neither a social club, lodge or a fraternity. While we encourage fellowship among our members, we use it merely as a means to an end; to get effective action by young men on worthy projects. Briefly, the Jaycees are a young men's civic group.

Membership qualifications are restricted only in two points: first, the age, where the provision is that a young man must be between the ages of 18 and 35, both inclusive; and second, that he be of good character. There is no restriction as to race, creed or color, type of business or any other qualifications.

The next question one might ask is "What is the purpose of the Jaycees?" The motive of the local Jaycees is leadership training through community development. John Shepherd, U. S. Jaycee president (1947-48), described the Jaycee movement as an organization whose greatest strength is that its ideal is far outside itself. Young men are not Jaycees for the sake of being Jaycees. Jayceism is not an end in itself, but a means to a much larger end. It is only a vehicle to help young men get where they are going—to help them achieve leadership.

If we take an objective interpretation of the statement above, we find that the basic purpose of the Jaycees is to provide the opportunity for young men to gain leadership experience. Jaycees don't build communities, Jaycees build men and the men build the communities.

Active participation in the Jaycees gives a young man assurance, stature, public speaking experience and many other attributes which point to a leader in business or community life. How does a young man learn the service?

Community service can best be defined by giving an outline of the type of programs under which

the local Jaycees operate. Programs in community development, an active interest in local, state and national government, public safety and youth welfare activities are just a few of the lines along which the local Jaycees extend.

Chelsea Jaycees have been involved in school bond issues, millage, construction of Pierce Park, Community Fair, Pass, Punt & Kick competition for youngsters, and many, many other projects throughout its 21-year existence.

The local Jaycees are currently active on the Chelsea Planning Commission, Village Council, Community Fair Board and Scouting, to name a few. This type of active participation builds men and gives them leadership training.

The Jaycee movement started in Chelsea on Jan. 11, 1955 when the Chelsea Jaycees came into existence through the extension effort of the Ann Arbor Jaycees. Charter members of this new or-

ganization were: Dr. J. H. Pilkington, Vince Burg, Robert Vanderkelen, Ray Knickerbocker, John Winans, Roy Guenther, George Knickerbocker, John Miller, Jack Wellnitz, William Adams, Robert Adams, Lyle Chriswell, Mike Green, Alton Guenther, John Jenkins, Merle Leach, Gerald Lehmann, James Miller, Arden Musbach, Richard O'Hara, Henry Orbring, Arthur Paul, Charles Popovich, Jr., John Popovich, Robert Shears, Judd Small, William Storey, and Robert Tobin.

Chelsea Jaycees were blessed over the years with many great presidents that led our chapter through years of achievement. The presidents by year were: 1954-55, Dr. J. H. Pilkington; 1955-56, J. "Vince" Burg; 1956-57, George Palmer; 1957-58, Larry Gahagen and Paul Schable; 1958-59, John Popovich and Roland Eder; 1959-60, Robert Vanderkelen; 1960-61, (Continued on page 12)

## GAMBLES

50% OFF

on  
Complete Stock  
of  
8-TRACK TAPES

All name-brand tapes.  
Famous Artists.

ALL TAPES PRICED  
AT 1/2 PRICE

## FOR TECHNICAL ILLUSTRATION & COMMERCIAL ART STUDENTS

Washtenaw Community College  
and Chelsea Public Schools

now offering the following courses:

TCA 104 Art Materials .....2 credit hours

TCA 236 Specialized Study .....3 credit hours

Classes meet Wednesday, 7-10 p.m. in the  
Art Room of Chelsea High School

Pre-register Today at Washtenaw Community College or prior  
to the first meeting on January 21 at the high school.

For further information, call 971-6300, Ext. 453

## RICK'S MARKET

20490 M-52

"The Store with the Spartan on the Door"

Phone 475-2898

BORDEN'S

HOMO MILK

1-Gal.  
Paper Crtn.

\$1.30

THE ORIGINAL - AUNT JEMIMA

PANCAKE & WAFFLE MIX

4 1/2-Lb.  
Box

\$1.27

VLASIC

SWEET MIXED PICKLES

16-Oz.  
Jar

79¢

FRENCH'S COUNTRY STYLE

MASHED POTATOES

16-Oz.  
Box

\$1.05

COMET CLEANSER

17-Oz.  
Can

39¢

MAXWELL HOUSE

INSTANT COFFEE

6-Oz.  
Jar

\$1.79

# HOT

## HOME-MADE BREAD

Week Days, 3:30 p.m.

Sat. & Sun., 10:30 a.m.

We Make Our Own Baked Goods - Fresh for You!

## SATURDAY SPECIAL

### RICK'S HOME-MADE WHITE BREAD

Loaf

47¢

(QUANTITY RIGHTS RESERVED)



Ads  
Taken  
till 1 p.m.  
Tuesday

# Advertise the Action Way! The Want Ad Way!

Just  
Phone  
475-1371

## WANT ADS

### The Chelsea Standard

#### WANT AD RATES

PAID IN ADVANCE—All regular advertisements, 75 cents for 25 words or less, each insertion. Count each figure as a word. For more than 25 words add 3 cents per word for each insertion. "Biting" ads or box number ads, see extra per insertion.

CHARGE RATES—Same as cash in advance, with 25 cents bookkeeping charge if not paid before 1 p.m. Tuesday preceding publication. Pay in advance, send cash or stamps and save 25 cents.

DISPLAY WANT ADS—Rate, \$1.40 per column inch, single column width only. 8-point and 14-point light type only. No borders or boldface type. Minimum 1 inch.

CARDS OF THANKS or MEMORIALS—Single paragraph style, \$1.50 per insertion for 50 words or less; 3 cents per word beyond 50 words.

COPY DEADLINE—1 p.m. Tuesday week of publication.

PIANO TUNING, Chelsea and area. Facilities for reconditioning and rebuilding. Used piano sales; reconditioned grands and verticals. E. Ecklund, 426-4429. x50tf

**J. R. CARRUTHERS**  
LICENSED  
RESIDENTIAL BUILDER  
CUSTOM HOMES  
ADDITIONS/FIREPLACES  
PATIO  
ROOFING/SIDING/REPAIRS  
475-7234  
CHELSEA 30tf

**KLINK  
EXCAVATING**  
Bulldozer - Backhoe  
Road Work - Basements  
Trucking - Crane Work  
Top Soil - Demolition  
Drainfield - Septic Tank  
Trenching, 5' up

Industrial, Residential, Commercial  
CALL 475-7631 13tf

STEP UP TO  
**KOZMA  
CONSTRUCTION**  
And  
Step  
Down  
In  
Price

LICENSED  
BUILDER  
FREE ESTIMATES  
COMPLETE  
CONSTRUCTION  
SERVICES

CALL  
**LEN KOZMA**  
475-7452

FOR SALE—3-bedroom ranch with 2-car attached garage on 2.22 acres in Chelsea School District. Now under construction. For additional information, call Farley Construction, 475-7643. 32tf

73 MERCURY MONTEGO MX brougham. Silver with black interior and top. Low mileage, excellent condition. Ph. 475-7323 after 4 p.m. -32

## WANT ADS

PATCHING and PLASTERING  
Call 475-7489. 83tf

### CLOGGED SEWER

**Reynolds Sewer  
Service**

We Clean Sewers Without Digging  
Drains Cleaned Electrically  
**FREE ESTIMATES**  
2-YEAR GUARANTEE  
Phone Ann Arbor NO 2-5277  
"Sewer Cleaning Is Our Business—  
Not a Sideline" 38tf

C—ustom Built Homes

O—h! We Remodel too

U—can count on us

N—o Job Too Small

T—rim Inside & Out

R—ough-in Only If

Y—ou Want to Finish

S—iding Aluminum, 5' Gutters

I—mmediate Attention

D—ALE COOK & CO.

E—stimates, Free

BUILDERS

Please Call

475-8863

**DALE COOK**

**BOB'S LOCK & KEY**

Complete Locksmithing Service  
Commercial, Residential,  
Automotive  
Luggage locks repaired.  
475-9071 -41tf

**GEORGE W. SWEENEY**

HEATING

Licensed Contractor  
Furnaces, air conditioning,  
and sheet metal work.

Phone 475-1867 -20tf

**CAR RENTAL** by the day, week,

end, week or month. Full insurance coverage, low rates. Call Lytle Christwell at Palmer Motor Sales, 475-1301. 25tf

WANTED—Used riding lawn mower, preferably with large wheels. Ph. 475-8310. x32

**CUT FOOD COSTS**

GROW YOUR OWN vegetables and fruit with new Stark Bro's vegetable seeds and famous Stark Bro's dwarf, semi-dwarf, and standard fruit trees.

Special early order discounts and free strawberry plants or vegetable seeds.

**Elson Bettner**

15700 Cassidy Rd.

475-9223

1975 VEGA Automobile, low mileage, excellent condition. Ph. 475-1971. -32

## WANT ADS

HOUSE FOR SALE by owner—4-bedroom ranch, family room, 2 baths, full basement, 3 years old. Ph. 475-1791. 14tf

### CHELSEA

**SCHOOLHOUSE APARTMENTS**  
Applications being taken for Building No. 2 to be open by Jan. 15. Phone R.E.T.S. Enterprises at 761-3025 or 475-1509 for further information. 25tf

### LEONARD REITH

Master Plumber

Licensed Electrician

Hot Water Heat

18238 N. Territorial

Rd.

Chelsea, Mich. 48118

Phone: 475-2044

**BLACK SWAMP DIRT** by the ton or yard, and backhoe work. Drain fields, basements dug. Driveways. Ph. 475-1963. -24tf

### CHELSEA

\$46,900—3-bedroom family home, 2 baths, full basement, fireplace, lots of built in storage, access to Half Moon Lake.

\$38,000 — 3 bedrooms, access to North Lake, 100x200 foot lot, Chelsea schools.

\$38,900 — 3-bedroom home, dining room, family room, fireplace, large country kitchen, screened porch, close to shopping.

\$29,900—2-bedroom home, country living, new bath, storage shed, patio, above ground pool, 1½-car garage, kennel.

\$45,000—4-bedroom, excellent location, 2-car garage, and breeze-way, close to high school.

**VACANT BUILDING PARCELS**, Chelsea schools, 10 acres up to 22 acres.

### FRISINGER

REALTORS

Chelsea 475-8681

Evenings:  
Paul Frisinger - 475-2621  
Toby Peterson - 475-2718  
Bob Koch - 475-4764  
Herman Koenn - 475-2613  
Max Renner - 475-7559  
Mary Ann Rickman, 475-2621 x32tf

80% Commission

will be paid to real estate sales person who has discovered the magic (of listing and selling) and who will bring listings into this office and sell them. Long-time established brokerage. No floor-time required. All replies confidential. Write for interview to Box No. JA-22, care of Chelsea Standard, Chelsea, and bring proof of last 3 years sales. x33

LOST — Green biddy basketball shirt (W.B.A.) about one month ago at CHS. Ph. 475-7509. 32

### YES

WE ARE MAKING  
LONG-TERM FARM  
REAL ESTATE  
LOANS

SEE US

**Federal  
LAND BANK  
Association**

P. O. Box 7006  
Ph. 769-2411 3645 Jackson Rd.  
Ann Arbor, Mich. 48103

## WANT ADS

### VACUUM CLEANERS

Authorized Electrolux  
sales and service.

**James Cox**  
428-8444, or 428-8688  
118 Riverside Dr., Manchester 48tf

### KNAPP SHOES

For Cushion Comfort  
**Robert Robbins**  
475-7282 48tf

FOR RENT — American Legion  
Hall, \$50. Call 475-1824. 40tf

### Complete Body Repair Service

Bumping - Painting  
Windshield and Side Glass  
Replacement

Free Pick-up & Delivery  
Open Monday Until 9  
CONTACT DON KNOLL  
FOR FREE ESTIMATE

### Village Motor Sales, Inc.

IMPERIAL - CHRYSLER  
DODGE - PLYMOUTH  
Phone 475-8861

1185 Manchester Rd., Chelsea  
Hours: 8 a.m. to 6 p.m.  
Tues. thru Fri. Until 9 Monday  
9 a.m. to 1 p.m. Saturday x14tf

### Automotive Rust Proofing Cars and Trucks

**Village  
Motor Sales, Inc.**  
IMPERIAL - CHRYSLER  
DODGE - PLYMOUTH  
Phone 475-8861

1185 Manchester Rd., Chelsea  
Hours: 8 a.m. to 6 p.m.  
Tues. thru Fri. Until 9 Monday  
9 a.m. to 1 p.m. Saturday 21tf

### PLUMBING HEATING OR ELECTRICAL

IN THIS NEW YEAR of 1976, whatever your need might be, call HILLTOP. You'll find us always there in all types of hazards and problems — ready to serve you with the best quality in workmanship and material at a reasonable price.

### HILLTOP PLUMBING

8316 Workner Road  
Chelsea, Mich. 48118  
475-2949 33

HELP WANTED — Male or female — Supplement your income. Part-time openings in Chelsea, Dexter and Ann Arbor areas. Early morning hours. Single copy delivery. Commissions and car allowance. Dependable car required. Ph. 455-3381, 769-5185 or call collect 1-483-2351. Detroit Free Press. x32

NEED LOVING CARE for your pre-schooler while you work days? Meals, snacks, and a playmate provided, in my home, Half Moon Lake area. Ph. 475-8838. x32

Headquarters for

**RED WING  
WORK SHOES**

Foster's Men's Wear 40tf

FOR SALE — Golden Retriever puppies, AKC, strong pedigree; OFA rating on dysplasia; shots, wormed, dew claws removed. Reservations accepted. Call 426-4289. x32

FOR RENT — Upstairs 1-bedroom apartment. All utilities paid. Large kitchen, den and utility room. 1 block from downtown. Available Feb. 1. Call 475-9853. 32

## WANT ADS

WILL BABYSIT at North Lake, 7:30 a.m. to 5:30 p.m., Mon.-Fri. Ph. 475-1282. 31

Once-A-Year Sale!  
Demos,  
at  
Tremendous Savings!  
New Cars & Trucks,  
DEMOS

First come, first served!

Stock No. 894—'75 Dodge Coronet Custom 4-dr. sedan, 360, auto., p.s., p.b., air cond., AM-FM, radio, 2-tone, etc. Was \$5837.80. NOW \$4735

### Used Trucks

'75 JEEP Renegade, V-8, 3-speed, p.s., low mileage ..... \$4395

'75 CHEVY ¾-ton pick-up, 350, auto., p.s., p.b., AM-FM, low mileage ..... \$3995

'73 CHEV ½-ton pickup, 507 V-8, auto., step bumper ..... \$1895

'72 DODGE W-300, 4-wheel drive dump, 318, 4-speed ..... \$3395

Also an excellent selection of new '75 Vans, Sportsman Wagons, Power Wagons, and Sno-Peters at tremendous savings. High trade-ins. Bank financing arranged.

**NEW '75s**  
Stock No. 795—'75 Duster Custom Coupe, 225, auto., p.s., AM radio, Space Duster pkg., etc. Was \$4251.95. NOW \$3745

**Quality Used Cars**  
'75 PLYMOUTH Gran Fury Custom 4-dr. hardtop, 318, auto., p.s., p.b., air cond., speed control, AM-FM, rear defogger ..... \$3995

'73 PLYMOUTH Sebring Plus 2-dr. hardtop, V-8, auto., p.s., p.b., air cond., radials, low mileage ..... \$2695

'73 CHRYSLER Newport 4-dr. sedan, V-8, auto., p.s., p.b., air cond., one owner ..... \$2195

'73 CHRYSLER New Yorker Brougham, 4-dr., full power, air cond. ..... \$2295

'73 CHARGER SE, 318, auto., p.s., p.b., air cond., AM-FM, radials ..... \$2995

'72 FORD Gran Torino 9-pass. wagon, 302, auto., p.s. .... \$1595

'72 VW Bus, good condition ..... \$1995

'71 VALIANT 4-dr., 6-cyl., auto., p.s., good transportation ..... \$1095

'71 MERCURY Monterey station wagon, V-8, auto., p.s., p.b. .... \$995

'70 DODGE Polara Custom 4-dr., V-8, auto., p.s., p.b., air cond. .... \$995

'68 INTERNATIONAL Travel-All, 6-cyl., 3-speed, engine overhauled ..... \$795

'68 PLYMOUTH station wagon, V-8, auto., p.s. .... \$395

'67 FORD Econoline van, 6-cyl., auto., low mileage ..... \$995

### Village Motor Sales, Inc.

IMPERIAL - CHRYSLER  
DODGE - PLYMOUTH  
Phone 475-8861

1185 Manchester Rd., Chelsea  
Hours: 8 a.m. to 6 p.m.  
Tues. thru Fri. Until 9 Monday  
9 a.m. to 1 p.m. Saturday x32tf

### Grass Lake Area

MAINTENANCE FREE 3-bedroom multi-level with nice appliances kitchen and pass-through to dining area. Family room with fireplace, and attached 2-car garage. On five acres. Bicycling distance to Portage Lake. Jackson schools. \$50,000. Call John Hunter at 994-5000, evs 668-7716.

**Spear & Assoc., Inc.**  
REALTORS  
1935 Pauline, Ann Arbor 33

FOR RENT—Large farm house, 4½ miles west of Grass Lake. Automatic heat, built-in stove and oven. Small family, no pets. \$175 a month plus security deposit. References. Ph. (517) 522-4316. -32

FOR SALE—AKC Irish Setter puppies. Shots. Ph. 475-9220. 33

## WANT ADS

FOR RENT—Fair Service Center for meetings, parties, wedding receptions, etc. Weekdays or week-ends. Contact John Wellits, phone 475-1518. x31tf

### Fireplace Builder

Field stone mason, block and brick mason, tuck pointing.  
**FREE ESTIMATES**  
Call 475-8025 after 3 p.m. x20tf

### Patrick Grammatico

**Pickup Caps & Covers**  
For all makes and models. Standard and custom-designed. From \$147.00. Free brochure. x42tf

### PIONEER COACH MANUFACTURING CO.

3496 Pontiac Trail  
Ann Arbor, 668-6785

### THORNTON

WOODED COUNTRY ROAD—Perfect setting for this new level home in Chelsea School District. 3 bedrooms, 2 full baths. Brick fireplace in large family room, plus basement for ping-pong, pool table or work bench. Attached 2½-car garage. \$57,500.

**RURAL LOCATION**—But only 15 minutes from Ann Arbor. Beautifully decorated ranch has open living area for easy entertaining. Fireplace, 1st floor laundry, 2½ baths, large bedrooms. Air conditioned. Full basement and attached garage. Upper \$60s.

\$39,900 — Buys this comfortable home on over 1 acre in Chelsea Schools. Spacious kitchen, study or sewing room, 3 bedrooms (2 are extra large). Plus basement and garage. Storage shed on property.

**HALE MOON LAKE** — Spacious chalet type home with convenient lake access. 2 fireplaces, large family room area, 2 full baths. This brand new home is ready for immediate occupancy. \$58,500.

**LUXURY HOME**—On 26 secluded acres with pond, more land available. Contemporary styling features glass walls, wrap-around deck, huge open living space. Super master bedroom suite with fireplace. \$142,000.

### VACANT LAND

14 ACRES—Rolling land, just west of Chelsea. \$18,500.

2 ACRES—In Waterloo township. Several parcels available from \$6,000.

15 ACRES — Wooded property in Chelsea Schools.

### ROBERT H. THORNTON

JR., P.C.  
REALTOR

CHELSEA ..... 475-8628  
Dolly Alber ..... 475-2801  
Peg Hamilton ..... 475-1870  
Mark McKernan ..... 475-8424  
Bob Thornton ..... 475-8857 32

FOR SALE—Antique ¾ pool bed and matching youth bed, cased Lincoln recliner chair and green-gold velvet maple rocker, maple coffee table, lamp table. Ph. 475-1873 after 4 p.m. x32

WILL DO HOUSECLEANING in Chelsea area. Ph. 475-1510. -33

## WANT ADS

HOUSE & BARN ROOFING—All types of roof repairs. Hot built-up roofing. Aluminum storm windows and doors, aluminum siding and seamless aluminum gutter, awnings and porch enclosures. Call Joe Hayes for free estimates, Manchester, 428-8520. x28tf

**CUSTOM SEWING** — Draperies, bed spreads, chair covers and ladies apparel. Ph. after 2:30 p.m., 478-2452 or 475-8745. 30tf

### Special of the Week

1975 OLDS VISTA CRUISER WAGON 3-seat, (Air Cond.)  
\$4995

### USED CARS

1975 OLDS Cutlass Supreme wagon, 2-seat, air cond. .... \$4395

1975 CHEVROLET Luv Mikado pickup, 8,700 miles ..... \$2995

1974 FORD Ranchero pick-up GT, 24,000 miles ..... \$3395

1974 CHEVROLET Vega Kambak wagon, 4-speed ..... \$2495

1973 BUICK ELECTRA 225 Limited 4-dr. hardtop, air cond., 39,000 miles ..... \$3695

1973 FORD Pinto runabout, automatic, 28,000 miles ..... \$1995

1972 OLDS Cutlass S 2-dr. hardtop, air cond. .... \$2495

1972 FORD Country Squire wagon, 3-seat, air cond. .... \$2195

1972 PONTIAC Catalina 4-dr. sedan, air cond. .... \$1795

1971 OLDS Cutlass S 2-dr. hardtop, air cond., 43,000 miles ..... \$2195

1971 PONTIAC Ventura II 2-dr. sedan, ..... \$1795

1971 PONTIAC Catalina 2-dr. hardtop, air cond. .... \$1695

1971 BUICK LeSabre Custom 4-dr. hardtop, air cond. .... \$1595

1971 FORD LTD 2-dr. hardtop, air cond. .... \$1495

1971 FORD Pinto 2-dr. sedan, 4-speed, 46,000 miles ..... \$1295

1970 BUICK Electra 225 4-dr. hardtop, air cond. .... \$1295

1970 LINCOLN 4-dr. sedan, air cond. .... \$1295

1970 FORD Galaxie 500 2-dr. hardtop, 57,000 miles ..... \$895

1970 FORD Galaxie 500 Country Sedan station wagon, air cond. .... \$695

1969 OLDS Delta 88 4-dr. sedan ..... \$795

1968 OLDS Delta 88 4-dr. sedan, air cond. .... \$295



## WANT ADS

**FOR RENT—APARTMENT**, 1-bed room, all utilities, stove, refrigerator. Available immediately. No pets or children. 426-8119 or 426-8393. x24 1f

**BUILDING SITE**—10 acres between Chelsea and Dexter about one mile from I-94, with man-made lake suitable for trout. \$18,000 or best offer. Call 426-8119 or 426-8393. x24 1f

## — YOUNG —

We list and sell lake, country and town properties. Eugene Young, Real Estate & Builder, 878-3792, 11506 Dexter-Pinckney Rd., Pinckney 48169. x34 1f

**CAR & TRUCK LEASING**. For details see Lyle Christwell at Palmer Motor Sales, 475-1301. 491f

**CARPENTER WORK** — Inside or out. Mr. Coburn, 475-2893. 121f

## COMPLETE ALUMINUM SERVICE

Siding - Awnings - Repairs  
Gutters - Storm Windows  
Remodeling

Free Estimates  
Call 475-9209

**Camelot Construction**  
Chelsea, Mich. x121f

## CUSTOM BUILDING

LICENSED & INSURED  
FREE ESTIMATES  
TOTAL CONSTRUCTION SERVICES

— Residential, commercial and industrial  
— Garages  
— Remodeling - Additions  
— Aluminum Siding  
— Roofing  
— Trenching

## SLOCUM CONTRACTORS & BUILDERS

Serving Washtenaw County  
For Over 20 years  
20700 OLD US-12  
CHELSEA  
Phone 475-8321 or 475-7611 x21f

**FLETCHER'S CARE HOME**—We have a vacancy for an ambulatory lady. Ph. (517) 851-8696. 34

## TYPIST

Full- or part-time, accurate and efficient.  
Apply to W. P. Leonard  
THE CHELSEA STANDARD  
300 N. Main, Chelsea x171f

**RAW FUR BUYER** — Phone 426-8556 or 426-8940, Dexter. x33

**BUILDING SPACE TO RENT** — Family Lakeside Sporting Goods Store, 137 Park St., Chelsea. Ph. 475-1885. x32

**Do You Like Plants?**  
Invite some friends over and have a Deco-Plant Party. Learn the new Luwasa system of growing plants in "Living Stone."  
For more information call Sue Komorek - 426-2164. x32

**Public Stenographer**  
Individual and Business

**Barbara Burda**  
429-9286

**THOROUGH**, reliable housekeeper seeks work in Chelsea. References. Ph. 475-8260. x32

## Dance to the Music of "SHADES OF NIGHT" SATURDAY, JAN. 24

9:30 p.m. to 1:30 a.m.

**AMERICAN LEGION HOME**  
8225 Dexter-Chelsea Rd., Dexter

Also listen to

**BILL KLAVE on piano**

in the lounge

every Friday night beginning at 7 p.m.

## WANT ADS

**FOR SALE** — Indian cents, postcards, books, foreign coins, Australian opals, and other articles. Will treat you fine. Lawrence E. Guinan, Sylvan Hotel, 114 N. Main St., Chelsea. x21f

**WEDDING STATIONERY** — Prospective brides are invited to see our complete line of invitations and accessories. The Chelsea Standard, Ph. 475-1371. x24 1f

## McCulloch

Portable Generators

Chain Saws

WE SELL SERVICE,  
SHARPEN AND TRADE.

Chelsea Hardware x21f

**FOR REAL DOLLAR SAVINGS** be sure and see us before you buy any new or used car. Palmer Motor Sales, Inc. Your Ford Dealer for over 60 years. 21f

**NEED A ROOF?** Call Toth Building & Remodeling, (313) 498-2178. 41f

A fine selection of

New and Used Cars

for immediate delivery

Harper Pontiac

Sales & Service

475-1306

Evenings, 475-1608 x40f

**GAR - NETT'S**

Flower & Gift Shop

Your Friendly Florist

112 E. Middle St., Chelsea

PHONE 475-1400

Funeral Flowers

Wedding Flowers

Cut Flowers (arranged or boxed)

Potted Flowering Plants

Green Plants - Corsages

WE DELIVER x21f

**Old Orchard**

Furniture Refinishing

ANTIQUES RESTORED

Old finish removed from wood or metal safely and economically.

513 Old Orchard

Stockbridge, Michigan 49285

(517) 851-8713 x10f

**Real Estate One**

Of Washtenaw

1196 M-52

Chelsea, Mich. 48118

We Make Things Simpler

For You!

**OLDER CHELSEA HOME**, nicely maintained. 3 bedrooms, 1 1/2 baths, with fireplace. Close to schools. \$40,000. x33

**QUICK OCCUPANCY** in this 3-bedroom ranch overlooking North Lake. Chelsea school district. 1 1/2 acres; additional acre available. \$42,500. x32

**DAYS - 475-8693**

Evenings—

Steve Flint.....475-1423

Jean Tschirhart.....475-2722

Jack Edington, Manager 428-2592

Evelyn White.....475-7551

Aileen Zsnyuk.....428-7824

Jerry Stein.....475-2162

Ted Picklesimer.....475-8174

Joe O'Connor.....994-1223

**HELP WANTED**—3 hours per day, 3 days a week. High earning potential. Ph. Pinckney 878-3881. x32

**ATTEK ALL TERRAIN Vehicle** for sale. Windshield and canvas top. \$750. Ph. 475-8754. x32

**1971 RUPP SNOWMOBILE**—Wide-track, electric start. Good condition. \$500. Ph. 475-2337. x32

## WANT ADS

**FOR RENT**—4,300 ft. office and warehouse with loading dock. Paved off-street parking. In Dexter. Call 426-4002 after 6 p.m., or week-ends. x121f

**FOR RENT** — Year-round cottage at Cavanaugh Lake. For married couple only. No children. No pets. Ph. 475-8469 or 475-2018. 181f

**CERAMIC TILE** — Reasonable prices. Excellent work. Ph. 426-2280. x241f

**BRICK MASON** — Brick work, block work, fireplaces, chimney repairs, homes and additions. Ph. 475-2584. x441f

**PAINTING—Exterior and interior.** Quality workmanship, free estimates, references, reasonable rates. Ph. (517) 851-7055. x481f

**SEE US for transit mixed concrete.** Klump Bros. Gravel Co. Phone Chelsea 475-2530, 4820 Loveland Rd., Grass Lake, Mich. x401f

**TRAVEL TRAILERS** — 13-ft. and up; 10x55 ft. trailers. John R. Jones Trailer Sales, Gregory, Mich. Phone 498-2655. x431f

**MUNICH AUCTION**—100 Main St., Munich, Mich. Auction every Sunday, 6 p.m. Danny Fleming, auctioneer. x121f

**STOCKBRIDGE, 13 acres, commercial, on M-52.** (517) 851-8144. x351f

**FOR RENT** — Small second-floor furnished apartment. Heat furnished. For married couple only. No children, no pets. Ph. 475-8469 or 475-2018. x181f

**Attic Insulation**  
6" blown insulation for \$25 per 100 sq. ft.  
ARNIE RAE  
Gregory (517) 851-8762 evenings x36

**FOR SALE** — Joslin Lake, 2-acre building site, with lake privileges. Call 475-8209. x301f

**REAL ESTATE**  
THREE - YEAR - OLD 3-bedroom home on 5 1/2 acres, walk-out basement, good garden spot, Gregory schools, \$35,500.

**LAKE-FRONT HOME** at Portage Lake (Jackson County), 3 bedrooms, field stone fireplace. Year-round enjoyment. \$20,000.

**EXECUTIVE RURAL ESTATE** — Large 4-bedroom Colonial home, fireplace, study, 2 1/2 baths, family room, intercom system, greenhouse, heated swimming pool, 40' x 80' hip-roof barn, workshop, natural pond, dwarf fruit trees, on 7 1/2 acres. Dexter schools. \$100,000.

**4-BEDROOM RANCH** type home. Oil forced air heat. No basement. One acre with good garden spot.

**\$17,500. Munith area.**  
11 1/2 ACRES on Dexter-Chelsea Rd. Approved drain field included. Area of fine homes. Dexter schools. \$12,000.

**10 ACRES** with creek boundary. Perc guaranteed. \$15,000. Chelsea schools.

**RENTAL AT CLEAR LAKE**—Year-round occupancy 2-bedroom home with fireplace, 2-car garage, excellent beach. \$230 a month plus security deposit.

**WATERLOO REALTY**  
355 Clear Lake  
JOANN WARYWODA, BROKER  
Phone 475-8674

**Evenings—**  
Sue Lowe, 475-2377  
Paul Erickson, 475-1748 x31

**FOR SALE**—Antique walnut drop leaf table, 1870. 72 in. by 41 in. Asking \$100. Ph. 426-4546. x33

**WURLTZER ORGAN**, 3 yrs. old. Air compressor, 1 h.p. Ph. 475-1613, 19278 N. Territorial. x32

**REAL ESTATE**  
38-ACRE FARM in northeast of Jackson County. 36 acres tillable. Three bedrooms, older farm home, 2-car insulated garage, large barn and workshop. \$40,000.

**TWO EXCELLENT 10-acre parcels** close to Stockbridge in Ingham County. Land contract available. \$10,000 each.

**23 ACRES** in Waterloo Recreation Area in Jackson County. Land contract available. \$13,000.

**Kira Henry Real Estate**  
(517) 764-1416 any time x32

**CERAMIC TILE** installation; new and remodel. Reasonable prices, excellent work. Ph. Frank, 426-2280. x35

**EXPERIENCED CLEANING LADY** wants jobs. Ph. 475-2928. x32

**ROOMS** by day, week or month. Excellent for the single man or retiree. Sylvan Hotel, Chelsea. Ph. 475-2911. x311f

**HOST**, the beautiful way to dry clean cars beautifully. Rent the HOST Machine. Merkel Home Furnishings, Chelsea, 475-8621. x32

**MAUSOLIUMS \* MONUMENTS**  
BRONZE TABLETS \* MARKERS

**BECKER MEMORIALS**  
6033 Jackson Road  
ANN ARBOR, MICHIGAN

## WANT ADS

**SEAMLESS ALUMINUM** eaves, troughs, roofing, siding, and carpentry work of all kinds. Experienced installers. All work guaranteed. For free estimate, call R. D. Kleinschmidt Co., 426-8836. x31f

**FOR SALE**—Tenor sax, Buscher Aristocrat, like new. Best offer. Ph. 475-8661. 131f

**VACANCY** for two elderly ladies in licensed adult foster care home. Ph. 498-2876. x21f

**COINS FOR SALE** — Lawrence Guinan, at the Sylvan Hotel. We'll treat you fine. x301f

**Waggoner Real Estate**  
WELL-BUILT and cozy with access to Portage Lake. 2 bedrooms, dining room, family room, living room with fireplace, basement and attached 2-car garage. Fenced yard, paved driveway, all carpeted. Asking only \$39,900.

**CALL TO SEE**  
Mary Flakowski.....426-8334  
Kathy Stewert.....426-2235  
"The Dexter People" x32

**WANTED** — Hauling jobs, junk, wood, almost anything. Call David, 475-8984. x301f

**MARSHALL REALTY**  
(313) 878-3182  
440 Dexter Rd., Pinckney, MI 48169

**146 ACRES**—2 barns, 4 corn cribs and other out-buildings, and a 2-story 3-bedroom farm home. \$950 per acre. L. C. available.

**18 ACRES** and a 24x60 3-bedroom modular home, \$34,800.

**70 ACRES** — Large 2-story farm home and out-buildings, 20x40 swimming pool. \$78,000. L. C. available.

**12 ACRES**—Comm. off 275 X-way. 7 miles to Metro. \$9,000 per acre. L. C. available.

**18 ACRES**—Barn and race track with 3-bedroom home, attached garage. Priced to sell.

**1 TO 50 ACRES VACANT**—All on land contracts.

**EVENINGS**  
EVELYN.....475-8587  
HANK.....1-517-851-7315

**MARSHALL REALTY**  
878-3182 x32

**FOR SALE**—Quantity of 16-in. fireplace wood. Make me an offer. 475-2602. x32

**OPEN 2 to 5 SUNDAY**

**BRAND NEW**—Tri-level home, carpeted, ceramic tile entry, family room with gas fireplace and large bay/serving counter, 3 bedrooms, 2 1/2 baths. On 1 acre in Chelsea Schools. \$54,500.

**13365 N. Territorial** — Take N. Territorial west from Dexter-Pinckney.

Your Host  
**CHUCK WALTERS**  
475-2408

**ROBERT H. THORNTON**  
Jr., P.C.  
REALTOR  
475-8628 769-5950 x32

**FOR SALE** — Used fuel oil tank, 275 gal. Legs, guage, filter, \$40. 8615 Dexter-Chelsea Rd. x32

**WANTED**—Trunks or foot lockers, sturdy and useful, not antiques. 426-4791 or 426-4221. x32

**FOR SALE** — 8 h.p. riding lawn mower, Wizard, 36" cut. Headlights and electric starter. \$450. CB radio, 2 antenna, Midland, \$150. Call 475-9369. x32

**HELP WANTED** — Furniture upholsterers. Full- or part-time. Experienced only. Ph. Ypsi. 482-1409. x37

**WILL BABYSIT** at North Lake, 7:30 a.m. to 5:30 p.m., Mon.-Fri. Ph. 475-1282. x33

**FOR SALE** — RCA A-M-F stereo. Contemporary styling with 8-track tape player. Excellent condition. Ph. 475-1476 after 4 p.m. x32

**WANTED TO RENT** until June, 3-bedroom house or apartment. Professional family with 2 children. Ph. 475-1459. x33

**FOR SALE**—Boy's clothing, sizes 14, 16, 18. Shirts, pants, sweaters, 50 cents and up. Also 5-drawer chest of drawers. 314 E. Middle. x32

**FREE DOG**—1 1/2 yrs. old, part Si-molla, part St. Bernard. Good outdoor pet. Call 682-8248 to see this exceptionally cute dog. x32

**LOST**—All white male cat named "Snowball." Large reward. Ph. Glenn Weir, 475-2509. x32

## PIERSON & SONS

LICENSED GENERAL CONTRACTORS

475-8750

New Construction,  
Remodeling, Siding.

## WANT ADS

**REDUCE** excess fluids with Fluid-ex. Lose weight with Dex-a-Diet capsules. Chelsea Drug. x37

**PROFESSIONAL ALTERATIONS** — Ph. 475-9075. x32

**A.K.C. DOBERMAN PINSCHER PUPS**—7 males to choose from. 6-weeks old. 475-2654 after 5 p.m. x32

## Manchester Area

**3-BEDROOM HOME** with study, large kitchen and eating space, living room with fireplace, family room, basement and 2 1/2-car garage. Nice patio and many trees, all on one acre overlooking Manchester. \$46,900.

**RANCH** on 6.69 ACRES with 3 bedrooms, 1 1/2 baths, full basement and 2 1/2-car garage. Barns and in-ground pool. Excellent condition. Great for kids! \$54,900.

**SPACIOUS 3-BEDROOM** home on 11.4 acres. 3 1/2 baths, living room with fireplace and walk-out lower level including two bedrooms and rec room. Possibility of a lake. Manchester schools. \$69,900.

**LARGE OLDER HOME** on 1/4 acre in Manchester. Four bedrooms, new kitchen plus remodeling thru-out. Quiet street and handy to all areas. \$37,500.

**JUST A LITTLE HELP** and there are great possibilities for this 3-bedroom ranch on one acre in Manchester. Kitchen with eating area, dining room and family room. \$27,000.

**OLDER 3-BEDROOM HOME** 3 miles west of Clinton. Downstairs remodeled. Completely insulated throughout. New roof, wiring, and plumbing. Small work shop. \$33,900.

**BEAUTIFUL HISTORIC BRICK** home on 6 acres in Manchester. 4 bedrooms, 2 1/2 baths, first-floor laundry, large kitchen, dining room, family room and attached 2 1/2-car garage. Lovely patio which includes gas grill. Custom built barn with stables and fenced riding ring. Exceptional property. \$89,500.

**PLEASE CALL**  
JIM MANN.....428-8182  
ELLIS PRATT.....428-8562

**Spear & Associates, Inc.**  
REALTORS  
Manchester 428-8388 x33

**TESTED** and approved by millions of homemakers. Blue Lustre carpet cleaner is tops. Chelsea Hardware. x32

**FOR SALE** — Ladies snowmobile suit, large, crib and mattress, baby clothes, other baby furniture and articles. Ph. 475-7148. x32

**2-BEDROOM APT.** for rent in Grass Lake. Newly remodeled. Ph. 522-8260 after 4 p.m. x33

**FULL-TIME BABYSITTER** needed for 10-month-old boy, Mon., Fri., 8 to 4:30. 475-8608, 8:30-3, Mrs. Meyer; 475-7688 after 5. x32

**FOR SALE**—Boy's and men's ice skates, size 3, 7, 10; also size 6 and 10 men's bowling shoes. Size 7 ladies skates. Phone 475-7087. x32

**FOR SALE** — Pontiac Firebird Trans-Am, 1971, automatic, color, sole, radio, \$1,700 or best offer. Ph. 428-8244. x32

**LOST** — Black Lab pup seven months, Sunday night on Madison St. Reward. 475-9315. x32

**APT. FOR RENT** — Large 1-bedroom. Partially furnished. \$170. \$100 deposit. Ph. 475-8870 or 475-1425. x33

**YOUNG PERSON** for paper route in village. Ph. 475-1774 after 5. x33

**ROOM FOR RENT**—Kitchen, house privileges. \$80 a month. Ph. 475-8127. x33

**AVAILABLE** March 1 — 240-acre dairy farm, Chelsea area. Nice home. Generous share arrangement or would consider renting. References required. Ph. 475-1500. x32

**APT. FOR RENT** in Chelsea—1 bedroom, stove, refrig., disposal, carpeting, air conditioning, central vacuum. No children, no pets. Ph. 1-474-8552. x35

**FOR SALE**—Sears humidifier; 3-speed man's bike. Phone after 4 p.m., 475-7226. x32









# BOWLING NEWS



## Women's Bowling Club

Standings as of Jan. 14

	W	L
Jiffy Mixes	54	26
Parish's Cleaners	53	27
Chelsea Milling	52	28
Thompson's Pizza	51	29
Palmer Ford	50 1/2	29 1/2
Washenaw Engineering	50 1/2	29 1/2
Norris Electric	43	37
Chelsea Grinding	41	39
Mark IV	39 1/2	40 1/2
Klink Excavating	37	42 1/2
Wolverine Bar	37 1/2	42 1/2
Larry's Roadside Mkt.	36 1/2	43 1/2
Niles' Amway	35	41
Lloyd Bridges	34	42
Rushing's Temp. Help	33	43
Norm's Barber Shop	27	53
Joe & Judy's	20 1/2	59 1/2

450 series and over: R. Hummel, 518; C. Powell, 507; D. Fouty, 508; N. Packard, 503; D. Eisenbeiser, 497; J. Rowe, 497; B. Fritz, 497; J. Hafner, 492; N. Kern, 492; C. Bradbury, 489; P. Poertner, 488; D. Judson, 477; G. Kuhl, 477; R. Bush, 476; P. Fitzsimmons, 472; B. Larson, 469; A. Alexander, 464; L. Orlovski, 462; P. Wurster, 453; D. Alber, 451.

150 games and over: R. Hummel, 186, 156, 196; C. Powell, 159, 184, 164; D. Fouty, 179, 181; N. Packard, 190, 169; D. Eisenbeiser, 175, 182; J. Rowe, 170, 174, 153; B. Fritz, 168, 195; J. Hafner, 165; N. Kern, 169, 155, 168; C. Bradbury, 188, 152; P. Poertner, 175, 155, 158; D. Judson, 158; R. Bush, 154, 182; P. Fitzsimmons, 201; B. Larson, 158, 190; A. Alexander, 188, 151; L. Orlovski, 168; P. Wurster, 176; D. Alber, 169; V. McClear, 178; D. Sweet, 157, 172; I. Fouty, 155; L. Hafner, 166; J. Norris, 170; R. Burkhardt, 169; A. Judson, 169; R. Whitaker, 167; S. Robards, 167; M. Kozminski, 151, 164; S. Settle, 154; D. Norris, 178; P. Norris, 167; M. E. Sutter, 158, 152; J. Reinhart, 168; S. Kline, 160; B. McGibney, 155, 157; K. McCalla, 158; T. Kenney, 162; M. E. Eder, 158; S. Ringe, 159; A. Boham, 183; P. Devulder, 167, 151; D. Rudnicki, 167; A. Fahrner, 162; D. Dorow, 160; E. Whitaker, 154.

## Junior Swingers

Standings as of Jan. 17

	W	L
Boone's Farm Five	47 1/2	14 1/2
Rods IV	43	25
Women Libbers	40 1/2	31 1/2
Team No. 2	36 1/2	31 1/2
Fantastic Five	36	32
Team No. 10	35 1/2	32
Alley Runners	33	39
The Strikin' Five	30	42
Born Losers	27	41
Boyer Automotive	26	42
Team No. 9	21	45

Girls, high games: N. Wideman, 170; C. Collins, 169; P. Greenleaf, 165; C. Miller, 164; D. Packard, 156.

Boys, high games: J. Sweet, 204; M. Sweeney, 202, 181; C. Ford, 192; J. Alexander, 191, 170; S. Lyerla, 190, 176.

Girls, high series: P. Greenleaf, 432; D. Packard, 413; C. Collins, 413; C. Miller, 403; S. Schulze, 402.

Boys, high series: M. Sweeney, 46; J. Sweet, 13; S. Lyerla, 113.

## Chelsea Lanes Mixed

Standings as of Jan. 18

	W	L
Numero Unos	89	44
Mark IV Lounge	81	52
Countrywide Builders	79	54
Torrice & Rawson	74	59
Doug's Painting	73	60
The Hopefuls	70	62
Buckeye Transplants	70	63
Adamson & Henson	70	63
Floyd's Gang	65	68
Bollinger's	65	68
DJ's	62	71
Rushing's Temp. Help	62	71
Hook, Line & Stinkers	62	71
Federal Screw Outlaws	60	73
Harmon & Cook	50	83
Ann Arbor Centerless	48	85

Women, 150 games or better: B. Smith, 188; I. Thibeault, 159; M. Henson, 155; J. Norris, 195, 189; E. Harmon, 180; D. Sahnes, 180; H. Scripser, 153; L. Behnke, 157; J. Poppe, 150; S. Ellenwood, 188; J. Longworth, 172; L. Alexander, 158, 167; D. Cozzens, 169.

Men, 175 games or better: T. Wisniewski, 195; F. Thibeault, 188, 192; E. Vassas, 214; V. Henson, 182; J. Norris, 178; K. Vassas, 175; A. Sannes, 210, 211; F. Northrop, 233, 219, 207; L. Bell, 179; L. McKinnon, 194; J. Richmond, 190; G. Poppe, 194, 198; D. Bolanowski, 189; R. Johnson, 180, 188, 197; D. Longworth, 178, 188, 176.

## Nite Owl League

Standings as of Jan. 19

	W	L
McCalla Sports	96	44
Hanco Foods Center	88	52
Norm's Body Shop	88	52
Steele's Heating and Cooling	86	54
Southern Bpy Take-Out	83	57
Bollinger's Sanitation	81	59
Michigan Kitchen and Bathroom	77	63
V.F.W. 4076	74	66
Chelsea Finance	74	66
Associated Spring	69	71
Cavanaugh Lake Store	67	73
Wahl's Oil	64	76
Ted's Standard	61	79
LithoCrafters No. 2	57	83
LithoCrafters No. 3	55	85
LithoCrafters No. 1	52	88
Belsor's Construction	52	88
The Odd Team	36	104

200 games and over: R. Snyder, 201; K. McCalla, 214, A. Kuhl, 204; T. Steele, 200; D. Buku, 221; K. Platt, 201, 206; R. Jones, 209; M. Fullerton, 202; D. Wutke, 216; G. Koda, 208.

500 series and over: D. Buku, 595; P. Case, 515; J. Elliott, 542; J. Dault, 505; A. Kuhl, 586; J. Borders, 540; T. Schulze, 533; A. Peterson, 526; T. Steele, 544; J. Barnes, 548; K. Platt, 568; M. Bristle, 513; K. McCalla, 570; R. Snyder, 544; L. Bauer, 506; R. Pagliarini, 519; L. Suppi, 530; M. Fullerton, 507; D. Wutke, 578; M. Maier, 523; D. Scott, 512; B. Stoffer, 126; P. Kelly, 500; G. Doda, 532.

Boys, high games: J. Sweet, 204; M. Sweeney, 202, 181; C. Ford, 192; J. Alexander, 191, 170; S. Lyerla, 190, 176.

Girls, high series: P. Greenleaf, 432; D. Packard, 413; C. Collins, 413; C. Miller, 403; S. Schulze, 402.

## Junior House League

Standings as of Jan. 15

	W	L
Jim Bradley Pontiac	88	45
Mac Tools	79	54
Chelsea Lanes	77	56
Smith's Service	76	57
Boyer Automotive	76	57
3-D Sales & Service	76	57
Mark IV Lounge	75	58
Ypsi Asphalt Paving	72	61
Dana Demons	68	65
Dana Maintenance	68	65
Washenaw Engineering	63	70
Slocum Construction	63	70
Fearless Five	60	73
Dell's Paints	57	76
Rockwell Intl. No. 1	56	77
Wolverine Bar	54	79
Ann Arbor Kirby	52	81
Rockwell Intl. No. 2	34	98

600 series: T. Steele, 614; D. White, 609.

525 or over: S. Glazier, 540; D. Clark, 533; G. Seitz, 534; J. Adams, 527; J. Harok, 573; J. Eder, 529; D. Buku, 593; P. Kelly, 561; B. Smith, 543; P. Kelly, 561; W. Beeman, 539; G. Beeman, 575; J. Borders, 549; D. Allen, 531; L. Salver, 536; J. Toma, 573; L. Tennant, 568; E. Vassas, 571; D. Murphy, 534; M. Murphy, 529; A. Felschmann, 529; D. Crosby, 525; R. Ringe, 536; F. Dickinson, 567; D. Cavender, 546; M. Smith, 559; W. Brown, 529; W. Kruse, 544.

## Leisure Time League

Standings as of Jan. 15

	W	L
Misfits	42	26
Unpredictables	41	27
Rug Rats	39	29
Sugar Loafers	37	31
Four Stoooges	35 1/2	32 1/2
Slowpokes	33 1/2	34 1/2
Crackpots	33	35
The Lakers	32 1/2	35 1/2
Highly Hopefuls	30	38
Roadrunners	30	38
High Rollers	28	40
Lady Bugs	26 1/2	41 1/2

500 series: D. Dault, 511.

400 series: C. Engler, 447; M. O'Donnell, 438; P. Munger, 483; V. Blanchard, 404; M. Shears, 417; E. Williams, 401; L. Haller, 409; J. Barkley, 412; C. Hoffman, 428; B. Tison, 405; P. Weigang, 411; S. Bowen, 452; S. Nagel, 406; R. Musbach, 465; D. Thompson, 433; S. Friday, 455; K. Haywood, 400; V. Wheaton, 478; D. Hafner, 431.

140 games: J. Anderson, 156; J. Delongrange, 147; C. Engler, 153; 162; M. O'Donnell, 167, 144; J. Staphis, 142; P. Munger, 167, 169; 157; V. Blanchard, 149; M. Shears, 146, 160; E. Williams, 140; S. Weston, 140; E. Swanson, 140; C. Kuzon, 140, 141; D. Dault, 160; 176, 178; L. Haller, 144, 141; J. Barkley, 152; C. Hoffman, 159; B. Tison, 146; P. Weigang, 152; S. Bowen, 157, 162; S. Nagel, 166; R. Musbach, 177, 169; M. R. Cook, 149; D. Thompson, 164, 141; S. Friday, 163, 183; K. Haywood, 153, 147, 160; V. Wheaton, 159, 153, 163; D. Hafner, 158, 146; E. Haydock, 140.

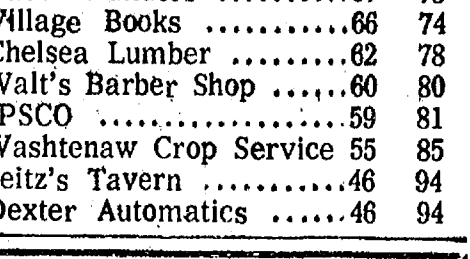
## Senior House League

Standings as of Jan. 19

	W	L
Mark IV Lounge	103 1/2	36 1/2
S.J. Custom Leather	93	47
Dana's Top Five	91	49
Luke's Sporting Goods	83 1/2	56 1/2
Sylvan Center	77	63
Gambles	75	65
Sarns, Inc.	68	65
Frank Grohs Chevrolet	65	68
Schneider's Grocery	68	72
Village Motor Sales	68	72
Bauer Builders	67	73
Village Books	66	74
Chelsea Lumber	62	78
Walt's Barber Shop	60	80
IPSCO	59	81
Washenaw Crop Service	55	85
Seitz's Tavern	46	94
Dexter Automatics	46	94

## Mobil-Toons

By GLENN



"He wants to be here when he runs out of gas... won't buy from anyone else!"

You get service here!

GLENN'S MOBIL SERVICE

1622 M-52 & I-94

CHELSEA, MICHIGAN

Phone 475-1767

GLENN HEIM

PROP.

600 series: J. Harok, 629; A. Sannes, 637; G. Beeman, 622; D. Welshans, 613; C. Genske, 602; G. Packard, 635; L. Salver, 606.

525 and over series: O. Cavender, 594; J. Fortner, 578; L. Bauer, 591; P. Fletcher, 551; W. Sisco, 543; C. Fore, 530; R. Mauer, 526; R. Spaulding, 555; G. Linebaugh, 556; H. Burnett, 540; M. Sweet, 551; G. Knickerbocker, 542; J. Banks, 544; P. Gale, 580; R. Kelly, 542; W. Westphal, 551; J. Lyerla, 538; R. Lentz, 544; R. Kiel, 505; M. Poertner, 557; N. Fahrner, 550; D. Ewald, 533; D. Hafley, 541; G. West, 560; V. Hafley, 533.

210 and over games: G. Linebaugh, 227; D. Welshans, 224; C. Genske, 231; G. Packard, 213, 254; L. Salver, 230; J. Fortner, 225; L. Bauer, 215; R. Kushmaul, 216; M. Sweet, 220; W. Westphal, 210; R. Lentz, 225; A. Sannes, 235; G. Beeman, 221, 212; J. Harok, 236; R. Kiel, 210; N. Fahrner, 215; G. West, 213.

## Charlie Brown Prep

Standings as of Jan. 17

	W	L
Dills' Pickles	26	10
Village Motor Strikers	25	11
Bullpups	21	15
The Monkeys	21	15
Super Strikers	20	16
Unbeatable	20	16
Pin Crackers	18	18
Pin Sweepers	18	18
Fantastic Five	17	19
Rolling Stones	12	24
All Stars	9	27

Girls, high games: C. Fahrner, 159; L. Davis, 145; M. Alexander, 124, 118; D. Thompson, 111; S. Messner, 110.

Boys, high games: J. Stock, 248, 189; J. Krichbaum, 191; S. Wilson, 188; R. Schulze, 165; B. McAllister, 157.

## Peppermint Patties

Standings as of Jan. 17

	W	L
The Pros	31 1/2	19 1/2
Red Barons	31	20
Blue Streaks	26 1/2	24 1/2
Super Stars	13	38

Games 70 and over: D. Rowe, 104, 96; K. Centilli, 94; T. Mindykowski, 2, 106; T. Harok, 72; G. Greenleaf, 112, 92; C. Hegadorn, 77, 77; M. White, 71, 99; E. Zink, 71; T. Loucks, 85; D. Waldeck, 100, 78; K. Shepherd, 98; Series 100 and over: D. Rowe, 200; K. Centilli, 159; T. Mindykowski, 188; T. Harok, 124; G. Greenleaf, 204; C. Hegadorn, 154; M. White, 170; E. Zink, 138; T. Loucks, 138; D. Waldeck, 178; K. Shepherd, 160.

## Bulldogs Mixed

Standings as of Jan. 15

	W	L
Spadafore's Stores	46	22
Good Luck's	40	28
Leftovers	39	29
Hawley Truck Repair	39	29
Weber Homes	39	29
Kyle Drywall	39	29
The Rats	35	33
3-D Sales	35	33
Huron Camera	32	36
Mac's Auto Sales	30	38
Doug's Painting	27	41
Three Rs	25	43
Stivers Bar	25	43
IPSCO	25	43

Men, high games and series: R. Nix, 199, 201, 218, 618; B. Smith, 188, 190, 548; W. Kruse, 193, 172.

513; D. George, 200, 512; M. Brightwell, 211; D. Kyle, 202; A. Hawley, 188; T. Stafford, 182; M. Grobaski, 177, 177; R. Irish, 174; R. Trevino, 172.

Women, high games and series: J. Kaiser, 179, 168, 501; P. Leidner, 170, 478; L. Binder, 187; D. Anderson, 179; J. Pagliarini, 175; D. Hawley, 169.

## Chelsea Suburban

Standings as of Jan. 14

	W	L
Waterloo Garage	85	55
Dancer's	85	55
Dairy Queen	80	60
Chelsea Drug	79	61
State Farm	77	63
Chelsea Assoc. Builders	67	73
Fletcher Mobil	65	75
Frisinger Realty	65	75
Dana Dee-Lites	65	75
Cavanaugh Lake Store	62	78
Mark IV Lounge	61	72
Chelsea State Bank	46	94

150 games and over: D. Hawley, 236, 174, 163; J. Buku, 203, 166, 181; N. Collins, 198, 176, 172; D. McAllister, 200, 180; P. Elliott, 202, 160; R. McGibney, 181, 180; N. Packard, 164, 160, 172; P. Harok, 194, 156; M. Usher, 163, 152, 168; L. Beeman, 161, 171; S. Hafner, 164, 162; A. Coppemoll, 175; D. Keizer, 161, 169; F. Cole, 177; A. Harrison, 150; E. Figg, 172; K. Snyder, 156; N. Prater, 151; G. Baczynski, 158; B. McGibney, 160; A. Hocking, 161; D. Vargo, 156; B. Beeman, 151, 154; J. Schulze, 162, 151; A. Bohne, 158, 164; E. Miller, 175; J. Burnett, 154; B. Hafley, 157, 155; B. Fike, 152; R. West, 166, 174; C. Turnwald, 159; S. Bowen, 162; B. Loucks, 157; M. DeLaTorre, 178, 158.

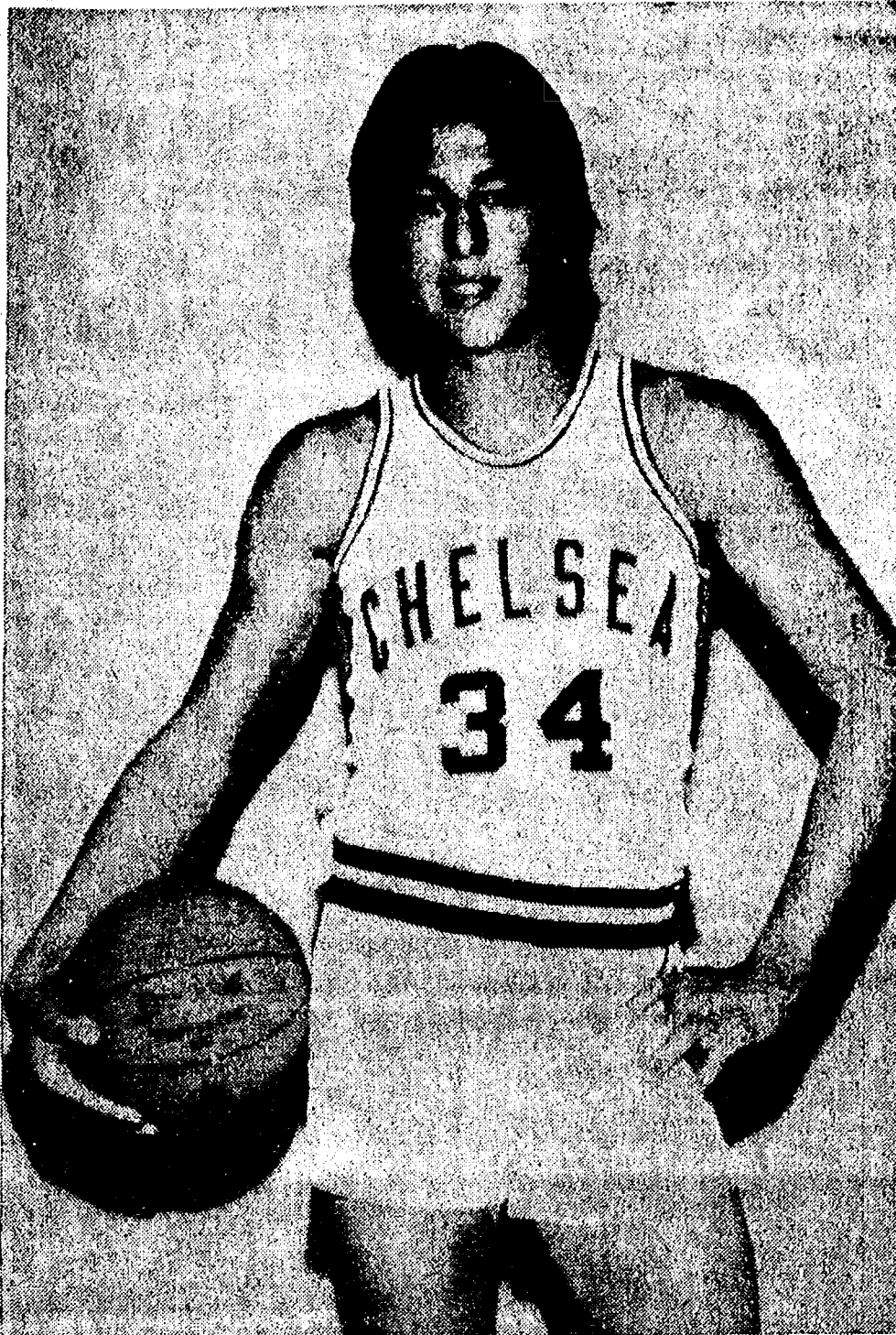
## Rolling Pin League

Standings as of Jan. 20

	W	L
Kookie Kutters	50	30
Sporadic Spatulas	46	30
Spooners	45	35
Grinders	44	36
Egg Beaters	43	37
Pots	43	37
Mopper Uppers	42 1/2	37 1/2
Poachers	42 1/2	37 1/2
Mixers	40	40
Kitchen Kapers	39	41
Belnders	39	41



## Cager of the Week



JUNIOR TONY ROBARDS, known as the "Bulldozer" of the 1975 CHS football team, has found his first year with the high school varsity basketball team "difficult." According to Tony, basketball requires a lot more concentration. "I have trouble getting the ball in the hoop." However, despite the difficulty, Tony says "basketball is a lot of fun." The 6'1" forward and center has averaged 25.8 percent from the floor for the first seven games played and 54.2 percent from the foul line. "I hope to improve by the end of the year," he added. Improvement that will hopefully make Tony one of next year's top players. As for the spring, he doesn't have any plans for school sports. Unless, of course he begins preparation for a '76 season with the football team. One of five children (the other four are girls) Tony is the son of Mr. and Mrs. Jim Robards.

### Max Plank in Recital at EMU

Max Plank, professor of saxophone at Eastern Michigan University, will present a recital as part of the continuing EMU Faculty Recital Series Monday, Jan. 26 at 8 p.m. in Pease Auditorium on the Ypsilanti campus. Accompanying him at the keyboard will be Elaine Jacobson, who is a piano instructor at EMU. Also performing in ensembles on the program will be Robert Quayle, bassoon, and Clifford Chapman, percussion, both faculty members in the Department of Music.

A wide variety in styles and periods of music will be offered, from 17th century works to 20th century music for saxophone and electronic sounds.

There is no admission charge for the concert.

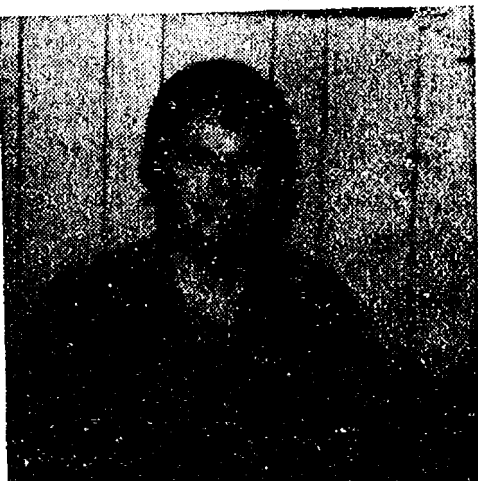
## NEW STORE HOURS

Starting Jan. 23rd, the following stores will be Closing Friday Evenings at 6:00 p.m.

SCHNEIDER'S GROCERY  
STRIETER'S MEN'S WEAR  
FOSTER'S MEN'S WEAR  
WINANS JEWELRY

## RED CARPET COIFFURES

ANNOUNCES



### KEN CLEMENT

To Serve You

11 years experience  
as a hair stylist.

He specializes in blow-dry styling,  
hair cutting, modern styling.

CALL US FOR AN APPOINTMENT TODAY

2907 BAKER RD.

PHONE 426-8800

You may also ask for Jeannine or Dean

## SEC ROUND-UP:

### Brighton Gives No. 1 Lincoln Scare in Close 59-51 Contest

Chants of "We're number one. We're number one," were no doubt running through the heads of Lincoln High school's basketball team as they dealt a close defeat to Brighton to retain top rung on the SEC ladder. The Railsplitters held a season record of 7-0. Last Friday's games also saw Saline mark up their fifth win of the season this time over Chelsea, to hold the Bulldogs to 0 and 7 in the league, while the Hornets held on to their second-place standing.

### Non-Smoker Cribbage Journey Set

A cribbage tournament for the non-smoker will be held at Beach Middle school room C-2 for four consecutive Monday nights beginning Jan. 26 at 7 p.m.

According to James Hoffmeyer, who is planning the series of cribbage nights, this tournament is an alternative to the Jaycee tournament for anyone who likes to play but who does not smoke. Hoffmeyer explained that he has participated in the Jaycee tournament for four years, but decided he could not do so again this year because the smoke-filled atmosphere was an irritant to him. "This tournament is not meant to compete with that of the Jaycees, it is simply an alternative," he stressed.

A champion will be crowned following the first night of play and will defend his or her title each succeeding week. A trophy will be awarded at the end of the tournament.

Fee for the non-profit tournament is \$1, which Hoffmeyer said would cover the cost of a trophy.

Hoffmeyer also requested that those with cribbage boards and cards bring them, so that there are enough to go around.

Further information may be obtained by calling Hoffmeyer after 5 p.m. at 475-8014.

### VA Hospital Volunteer Chief To Speak Here

On Wednesday, Jan. 28 VFW Post 4078 will host William Balfort, chief volunteer of services for the Ann Arbor Veterans Administration Hospital. Balfort will be the guest speaker at the 7:30 p.m. meeting in the VFW Hall, 105-B N. Main.

He will speak on the operational procedures at the VA Hospital since the start of the long investigation beginning last August. Because of the publicity on TV and in the newspapers, the group felt an explanation of sorts might help the veteran and his family. A question and answer period will be allowed for.

All veterans, families and friends are welcome and urged to attend this meeting together with post and auxiliary members. The public is also welcome.

Plans for this instructive meeting were set up by service officers, Lawrence Boyer, along with hospital chairman and volunteers, William Pierce and Kermit Sharp. A coffee hour will follow.

You could end most quarrels if you could get people to define what their words mean.

Saline 60, Chelsea 62— Chelsea High school almost saw their first conference win of the season last Friday evening when they started closing in on the Hornets lead. However, they were only able to narrow the score to 59-52. Foul line shooting, which has been the Bulldogs' demise all season long, proved to be their main advantage Friday evening as they connected on 26 of 37 attempts. Saline hit for nine of 21. High scorer for the Bulldogs was Captain Randy Guenther with 21 points. Hornet player Steve Monty was top scorer for his team with 16.

#### Lincoln 59, Brighton 51—

Top SEC team Lincoln also experienced a scare Friday evening when the Brighton Bulldogs almost took a victory that would have topped their 7-0 record. The Bulldogs were ahead at the half, 24-18. However the Railsplitters outscored them in the third quarter, 19-8 to take the lead for good. Leading Lincoln's scoring was Joann Barbour with 23 points. Dean Clark was high man for Brighton with 19.

Novi 72, South Lyon 53— Novi's Wildcats performed from the floor Friday evening to blast South Lyon, 72-53, for their second SEC win of the season. While the Wildcats shot with ease from the floor, the Lions were only able to make eight of 38 shots in the first half, giving Novi the lead. High scorer for Novi was Scott Parsons with 25 points. Bill Giorghon had 17 and Bob Banatz pitched in 11. Kevin Baize put in 21 for the Lions while Scott Herald scored 10.

#### Milan 68, Dexter 54—

An excellent Milan defense won the game for the Big Reds Friday evening as they dumped Dexter, 68-54. Double figure scorers for Milan were Kurt Dingman with 22 points, Eric Wuster with 18 and Jim Dutton who put in 14 points. Only two Dexter players managed to score in the double figures. Doug Gross put in 12 points and Bruce Vail added 11.

The prescription for most of the ills that beset the world is just plain, everyday honesty.

A  
QUALITY  
PAINT  
SAVES  
YOU  
MONEY!



COVERS MORE!  
LOOKS BETTER!  
LASTS LONGER!

Quality Dutch Boy House Paint saves you money because its superior hiding power helps you cover more surface area.

• Its tough, lustrous finish wears slowly, evenly.  
• Flows on smoothly, easily.  
Get Dutch Boy House Paint from us today!

If there's quality on the inside, there's a Dutch Boy on the outside.

You will remember the quality of Dutch Boy paints long after the price is forgotten.

**MERKEL**  
Home Furnishings

#### SOUTHEASTERN CONFERENCE

	SEC	ALL
	W L Pct.	W L Pct.
Lincoln	7 0 1.000	9 0 1.000
Saline	5 1 .833	7 1 .875
Milan	5 2 .714	7 3 .700
Dexter	4 3 .571	5 5 .500
Brighton	3 4 .429	5 5 .500
Novi	2 5 .286	3 6 .333
South Lyon	1 5 .167	3 6 .333
Chelsea	0 7 .000	2 9 .182

#### SCORES

Lincoln 59, Brighton 51  
Saline 60, Chelsea 62  
Milan 68, Dexter 54  
Novi 72, South Lyon 53.

### Jaycees...

(Continued from page seven)

Merle Leach; 1961-62, Daniel Maroney; 1962-63, George Winchester, Jr.; 1963-64, Lyle Christwell; 1964-65, George "Ed" Aklin; 1965-66 Arthur Stoll; 1966-67, Ron Branham; 1967-68, Bob Updegraff; 1968-69, Don Proctor; 1969-70, Walt Brown; 1970-71, Art Steinaway; 1971-72, Dave Rowe; 1972-73, Mike Eubanks; 1973-74, Dick Cail; 1974-75, Norm Colby; and 1975-76, Jerry Kraus and Mitch Zink.

Chelsea Jaycees are proud of their heritage and past accomplishments. The Jaycees believe in Chelsea and are continually trying to make our community a better place in which to live and raise a family. With the help and backing of the citizens of Chelsea this goal will be reached.

## DUNBAR'S DEXTER LOCKER

PAUL DUNBAR, OWNER  
8083 MAIN ST., DEXTER

PHONE 426-8466

**HAMBURGER PATTIES** **79<sup>c</sup> lb.**  
(In 10-Lb. Pkgs.)

**SLAB BACON (Chunks)** **.99<sup>c</sup> lb.**

**98c lb. BEEF SIDES** **Pre-cut \$20**  
**\$1.19 lb. HIND QUARTERS** **Ready \$10**  
**86c lb. FRONT QUARTERS** **To Go \$10**

Buy Ready-Cut Sides and Save

Call for More Information

Discount to Civic Groups - We Accept Federal Food Stamps

**CUSTOM SLAUGHTERING PROCESSING**

**A Standard Want Ad Gets Results!**

STILL MANY BARGAINS AT

**Dancer's JANUARY SALE**

EXTRA SPECIALS

ONE LOT MEN'S NAME BRAND

**LEISURE SUITS**  
**1/3 to 1/2 OFF**

MEN'S & BOYS'

**Winter Jackets - Sweaters**  
**Long-sleeve Shirts**  
**Flannel PJ's - Robes**  
**1/2 Off**

**Snowmobile Suits**  
**Hunting Coveralls**  
**Flannel PJ's - Robes**  
**1/4 OFF**

**SLACKS - KNIT TOPS**  
**JEANS - DRESSES**  
**1/3 Off**

MEN'S NAME BRAND

**DRESS JEANS**  
**1/2 OFF**

WOMEN'S

**Winter Coats - Skirts**  
**Sweaters - Dresses**  
**Pant Suits - Sports Wear**  
**1/2 Off**

WOMEN'S

**NIGHT GOWNS & ROBES**  
**1/3 OFF**

INFANTS' & GIRLS'

**Snow Suits - Snowmobile Suits**  
**Jackets - Coats**  
**1/2 Off**

FOR THE ENTIRE FAMILY

**SHOE BOOTS - 1/3 OFF**

Your BankAmericard and Master Charge Welcome

**GIANT JANUARY WHITE SALE**

**25% OFF on Entire Stock of**

**BLANKETS - SHEETS - PILLOW CASES**  
**TOWELS AND MUCH MORE**

Reg. \$8<sup>99</sup> Values NOW \$6<sup>74</sup> Reg. \$19<sup>99</sup> Values NOW \$14<sup>99</sup>  
**PLUS - CHOICE SHEETS at 50% OFF**





**Polly's** MASTER  
MARKETS

1101 M-52

**CHELSEA, MICH.**

(Corner M-52 and Old U.S. 12)

Supplement for Ann Arbor News, Chelsea Standard

**get to know us...**

**WE CAN HELP YOU SAVE ON YOUR FOOD BILL!**

**OPEN .  
DAILY:**

**8**

**A.M. TO**

**10**

**P.M.**

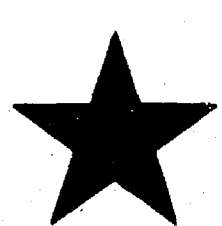
**OPEN  
SUNDAY:**

**9**

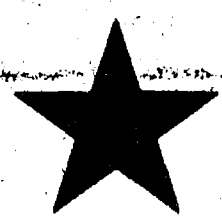
**A.M. TO**

**9**

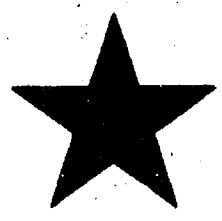
**P.M.**



**QUALITY PRODUCE**



**QUALITY MEAT**



**COLD BEER & WINE**



**LOTTERY TICKETS**



**SIDES OF BEEF**



**FRUIT BASKETS**



**DRY CLEANING**



**PHOTO PROCESSING**




**VARIETY AT LOW PRICES**



# 1976 WE'RE ONLY JUST BEGINNING

We Reserve the Right to Limit Quantities to Reasonable Amounts

Government Inspected



**Polly's MASTER MARKETS**  
1101 M-52  
**CHELSEA, MICH.**  
(Corner M-52 and Old U.S. 12)

**SPRING ARBOR RD. STORE OPEN 24 HOURS**  
All Other Stores  
Daily 8 to 10 Sunday 9 to 9



**WHOLE FRYERS**  
Lb. **49¢**

SAVE 40¢ WITH-IN-STORE COUPON

Farmer Peet  
**HOT or REGULAR PORK SAUSAGE**  
1-Lb. Roll **89¢**



Try this taste treat tonite...

**FLAVOR-CRISP PRESSURE FRIED CHICKEN**

21 Pieces ..... \$4.49  
12 Pieces ..... \$2.79  
9 Pieces ..... \$1.99

Available at Polly's on Spring Arbor Rd.

Call 787-5228  
(Please Allow 20 Minutes for preparation)

Government Inspected  
**CUT-UP FRYERS**  
Lb. **55¢**

Government Inspected  
**QUARTERED CHICKEN LEGS**  
Lb. **59¢**

Government Inspected  
**QUARTERED CHICKEN BREASTS**  
Lb. **69¢**



LB. PKG. **\$1.69**

Swift Premium Sliced  
**BEEF LIVER** ..... Lb. **59¢**  
Eckrich Sliced  
**BOLOGNA** ..... Lb. Pkg. **\$1.29**  
Eckrich  
**SMORGAS PAK** ..... Lb. Pkg. **\$1.39**  
Eckrich Beef  
**SMORGAS PAK** ..... 12-Oz. Pkg. **\$1.39**  
Hygrade Smoked  
**PORK CHOPS** ..... Lb. **\$1.79**



Blue Ribbon Quality

Farmer Peet  
Lean & Meaty

**SPARE RIBS**

Lb. **1.09**

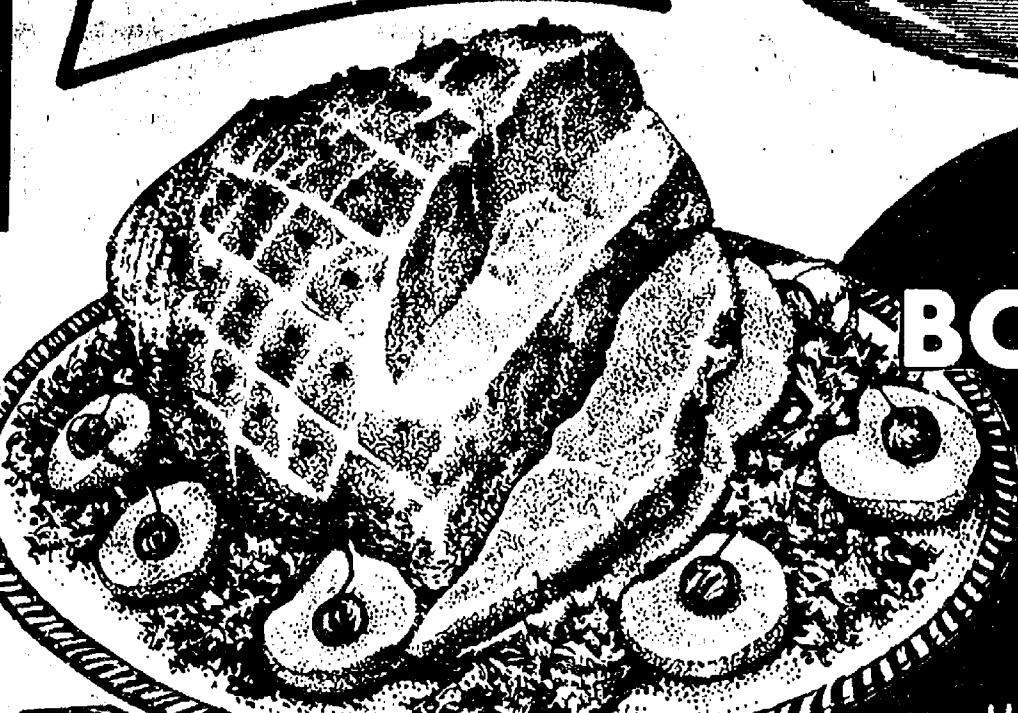
SAVE 40¢ WITH-IN-STORE COUPON

Farmer Peet  
SLICED  
**LUNCH MEAT**  
1-Lb. Pkg. **99¢**



LB. PKG. **\$1.29**

Herrud Chunk  
**BRAUNSWEIGER** ..... Lb. **69¢**  
Greenwich  
**CORNISH HENS** ..... Ea. **99¢**  
Booth  
**FISH CAKES** ..... Lb. **59¢**  
Hygrade Porter  
**BACON** ..... 3-Lb. Box **\$2.09**  
Live  
**LOBSTER** ..... Available at Polly's on Spring Arbor

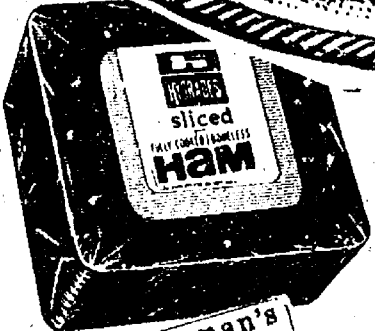


Farmer Peet  
**BONANZA HAM**  
Lb. **1.69**

Polly Pride Quality Beef  
**GROUND CHUCK**  
Lb. **89¢**

SAVE \$1.00 WITH-IN-STORE COUPON

Polly Pride Quality  
**ALL BEEF HAMBURG**  
10-Lb. Bag **6.90**



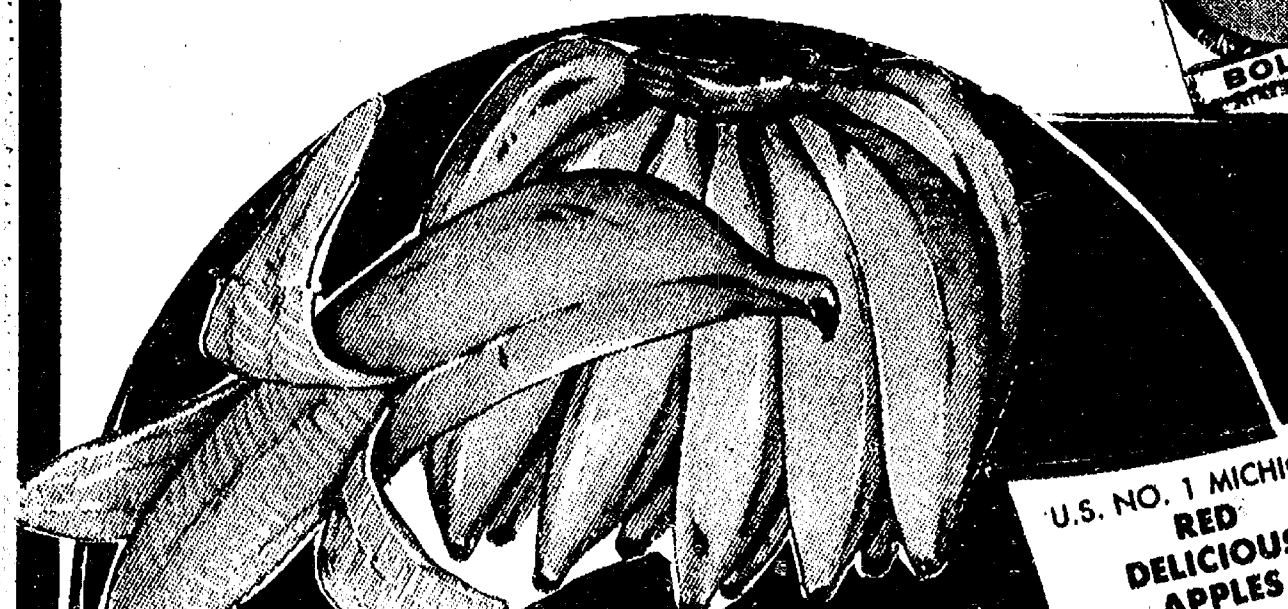
Hygrade Sliced  
**COOKED HAM**  
10-Oz. Pkg. **\$1.59**



Hygrade  
**SLICED BOLOGNA**  
Lb. Pkg. **99¢**

Eckrich  
• Beef  
• Corn Beef  
• Turkey  
• Chicken  
3-oz. pkg. **49¢**

Scot Pride  
**BREADED MEAT PATTIES**  
• Veal  
• Beef  
• Pork  
• Chuckwagon. 18-oz. pkg. **1.09**



Golden Ripe  
**BANANAS**  
Lb. **16¢**

U.S. NO. 1 MICHIGAN  
**RED DELICIOUS APPLES**  
3-Lb. Bag **49¢**  
with in-store coupon

U.S. NO. 1  
**IDAHO POTATOES**  
10-Lb. Bag **1.09**

Fresh  
**CELLO CARROTS** ..... 2-Lb. **37¢**  
Fresh  
**COLE SLAW** ..... **37¢**  
Fresh Cello  
**RED RADISHES** ..... 8-Oz. **10¢**  
For Your Feathered Friends  
**BIRD SEED** ..... 5 Lb. **79¢**



We make it better for you.

**Sausage Sale!**

1-Lb. Roll  
• **PORK SAUSAGE**  
12-oz. Pkg.  
• **LINK SAUSAGE**  
12-oz. Pkg.  
• **ITALIAN SAUSAGE**  
12-oz. Pkg.  
• **SAUSAGE PATTIES**

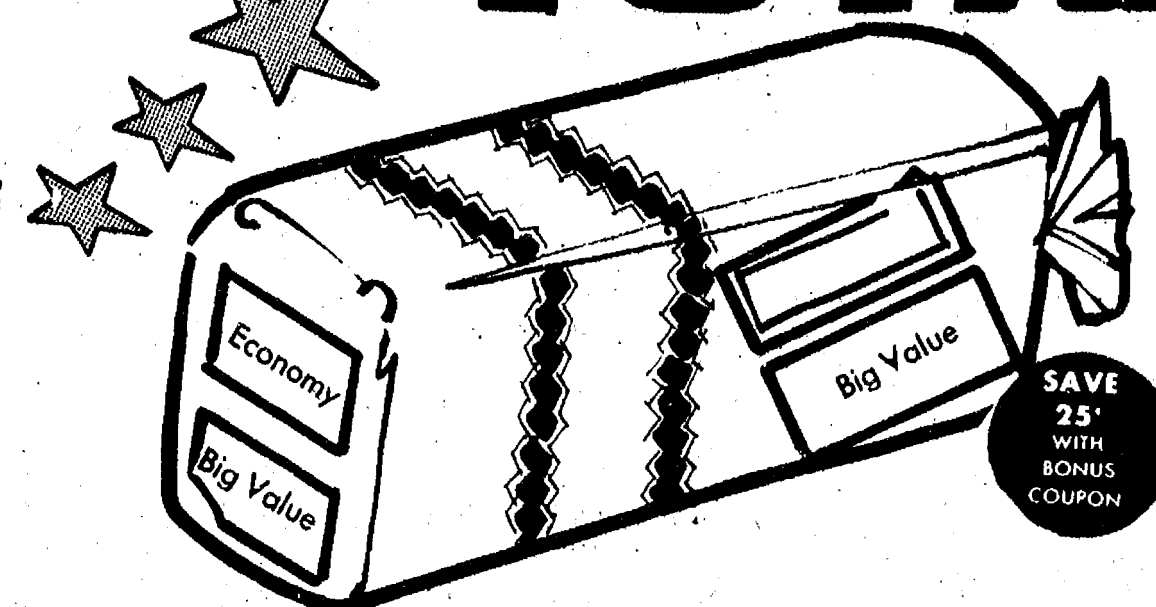
Your Choice!  
**1.39**

Quality Responsibility



# TO SAVE YOU MORE IN YOUR TOTAL FOOD BILL

# 916



Economy Big Value  
**WHITE BREAD**

**5** 20-oz. Loaves. **\$1**

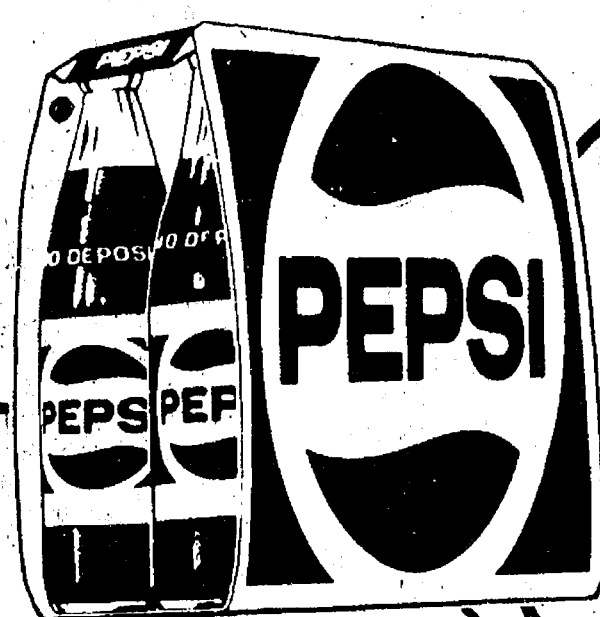


**Polly's** MASTER MARKETS

1101 M-52  
**CHELSEA, MICH.**  
(Corner M-52 and Old U.S. 12)

**SAVE 25¢ WITH IN-STORE COUPON**  
Gala **PAPER TOWELS** 2 Jumbo Rolls **89¢**

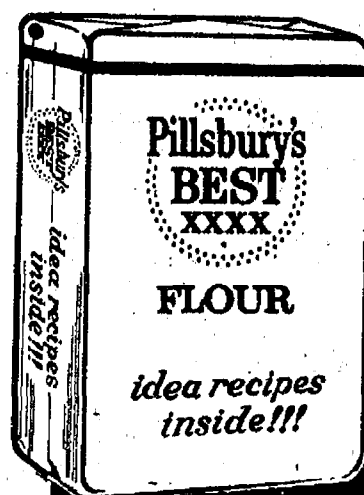
**SAVE UP TO 60¢ WITH IN-STORE COUPON**  
Paramount Wavy **POTATO CHIPS** 12 oz. **69¢**



8-Pak **PEPSI**  
MOUNTAIN DEW or PEPSI LIGHT

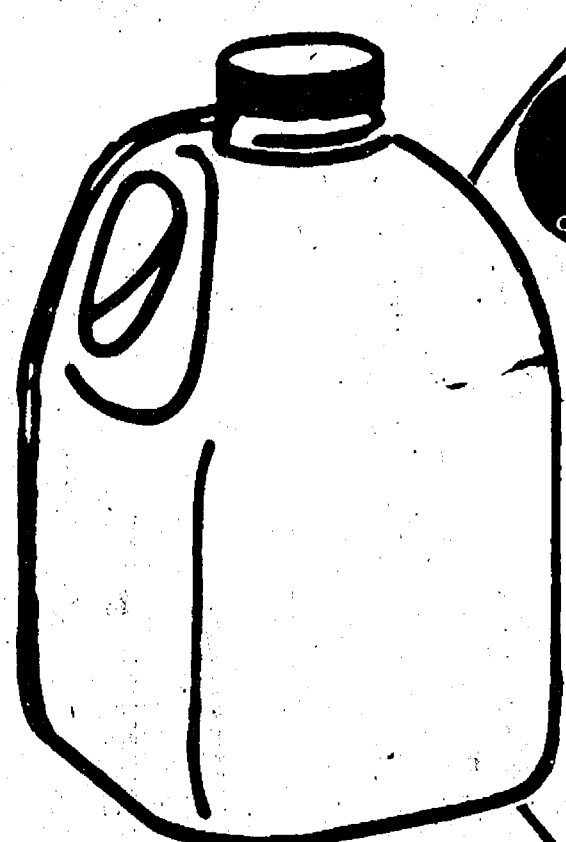
**127**

**SAVE UP TO \$1.32 WITH BONUS COUPON**



**SAVE 30¢ WITH BONUS COUPON**

Pillsbury's **FLOUR**  
10-lb. Bag **147**



**SAVE UP TO 80¢ WITH BONUS COUPON**

Sealtest  
HOMOGENIZED  
**MILK**  
Gallon **119**

**SAVE UP TO 58¢ WITH IN-STORE COUPON**

**BUBBLE-UP**  
DRINK MIXER

**2** 28-Oz. Bottles **69¢**

Wesson	VEGETABLE OIL	38-Oz.	\$1.13
Hunts	TOMATO PASTE	6-Oz.	22¢
Hunts	PEACHES	29-Oz.	49¢
Wicac	SAUERKRAUT	32-Oz.	49¢
Dove	BATH SOAP	3 Bars	\$1
Airwick Solid	AIR FRESHENER	3 5-oz.	\$1

**SAVE 20¢ WITH IN-STORE COUPON**  
Light Blend **IMPERIAL MARGARINE** 1-Lb. Qts. **39¢**

**SAVE 60¢ WITH IN-STORE COUPON**  
Dairy Fresh Sliced **AMERICAN SINGLES** 12-oz. **89¢**

**NEW!** Sealtest Light n' Lively **COTTAGE CHEESE** 15-oz. **49¢**

Pillsbury **BUTTERMILK BISCUITS** 8-oz. **11¢**



Keebler **ZESTA SALTINE**  
CRACKERS

**16-Oz. 47¢**

**SAVE UP TO 40¢ WITH IN-STORE COUPON**



**SAVE 30¢ WITH IN-STORE COUPON**

Nescafe **INSTANT COFFEE**  
10-Oz. **219**

Hefty Tall	KITCHEN BAGS	15-Ct.	79¢
H-C	FRUIT DRINKS	46-Oz.	43¢
Stokely	Beets	5 16-oz.	\$1
Stokely Sliced	CARROTS	5 16-oz.	\$1
Stokely Cut	GREEN BEANS	5 16-oz.	\$1
Van Camp	BROWN SUGAR BEANS	3 16-oz.	\$1

**SAVE UP TO 20¢ WITH BONUS COUPON**  
Pillsbury Extra-Lite **PANCAKE MIX** 2-Lb. **56¢**

**SAVE UP TO 30¢ WITH BONUS COUPON**  
Mrs. Butterworth **PANCAKE SYRUP** 36-oz. **\$1.39**

**Save UP TO 99¢**

WITH THESE BONUS COUPONS AND POLLY'S IN-STORE COUPONS

Keebler **DELUXE GRAHAMS** 13 1/2-oz. **79¢**

Keebler **FUDGE STRIPES** 12 1/2-oz. **79¢**



**SAVE 10¢ WITH IN-STORE COUPON**

Miracle Whip **SALAD DRESSING**  
32-oz. **79¢**

**VALUABLE COUPON**  
**SAVE 30¢**  
Pillsbury **FLOUR** 10-lb. **\$1.47**  
LIMIT 1 PER COUPON PER FAMILY  
GOOD THRU 1-25-76

**VALUABLE COUPON**  
**SAVE UP TO 30¢**  
Sealtest Homogenized **MILK** gallon **\$1.19**  
LIMIT 2 PER COUPON PER FAMILY  
GOOD THRU 1-25-76

**VALUABLE COUPON**  
**SAVE 25¢**  
Economy Big Value **WHITE BREAD** 5 20-Oz. **\$1**  
LIMIT 5 PER COUPON PER FAMILY  
GOOD THRU 1-25-76

**VALUABLE COUPON**  
**SAVE UP TO \$1.32**  
8-Pak **PEPSI** MOUNTAIN DEW or PEPSI LIGHT 16-Oz. **\$1.27**  
LIMIT 2 PER COUPON PER FAMILY  
GOOD THRU 1-25-76

**Bakery Delights**  
FRESHLY BAKED!

Fresh **APPLE PIES** 8-Inch **98¢**

Fresh **HAMBURG BUNS** 8-Pak **49¢**

Fresh **FRENCH BREAD** 1-lb. **59¢**

**CREME CURLS** 6-Pak **89¢**

## SNACK BAR SPECIALS!

MON. Chicken Ala King & Tossed Salad - 99¢  
TUES. Tomato Soup & Grill Cheese - 89¢  
WED. Meat Loaf, Mashed Potatoes, cole slaw - \$1.29  
THUR. Polly's Broasted Chicken, Mashed Potatoes & Cole Slaw - \$1.29  
FRI. Fish & Chips, F. F., cole slaw - 99¢  
SAT. Sloppy Joes, F. F. & cole slaw - 99¢

Snack Bar Located at Polly's in Spring Arbor

**SAVE UP TO \$1.00 WITH IN-STORE COUPON**  
Hawthorne Melody **ICE CREAM** 1/2-Gallon **79¢**

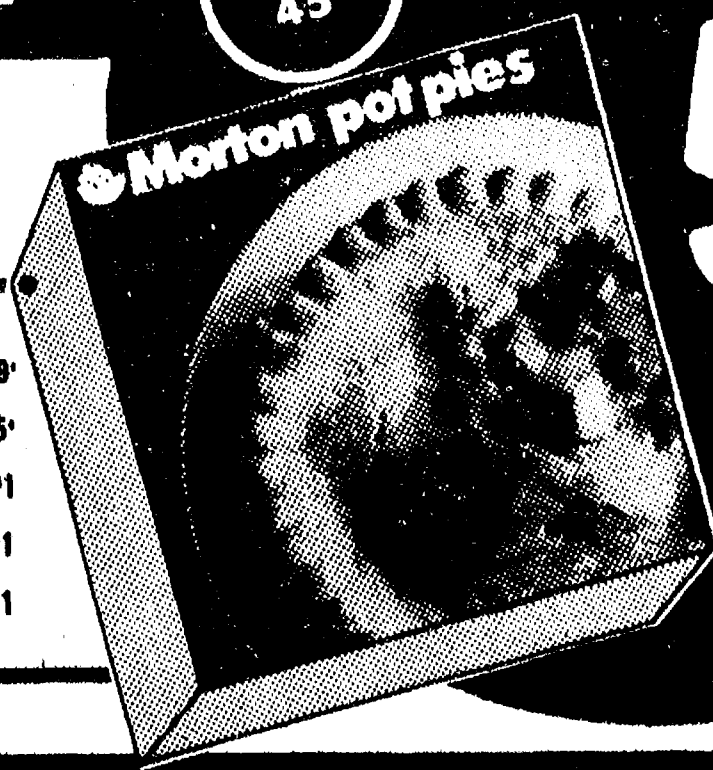
**TONY'S PIZZAS**  
• CANADIAN BACON  
• SAUSAGE & MUSHROOM  
• SAUSAGE & PEPPERONI

**\$1.59**

Ore Ida Regular **FRENCH FRIES** 32-Oz. **69**

Rich's **COFFEE RICH** 32-oz. **44¢**

Scot Lad	ORANGE JUICE	12-oz.	48¢
Queen of Scot Sliced	STRAWBERRIES	10-Oz.	45¢
Banquet	APPLE PIE	8-in.	69¢
Pepperidge Farm	FUDGE CAKE	17-oz.	\$1.39
Banquet	POT PIES	8-Oz.	27¢
Morton	T.V. DINNERS		49¢
BirdsEye	COOL WHIP	9-Oz.	85¢
Queen of Scot	CUT CORN	3 10-oz.	\$1
Queen of Scot	PEAS	3 10-oz.	\$1
Queen of Scot Mixed	VEGETABLES	3 10-oz.	\$1



Morton **POT PIES**

**5** 8-oz. pkgs. **\$1**

Minute Maid **ORANGE JUICE** 12-oz. cans **\$1**  
WITH IN-STORE COUPON



# Thank You

FOR SHOPPING AT...



WHERE WE ARE  
HAPPY TO.....

**save** YOU MONEY!